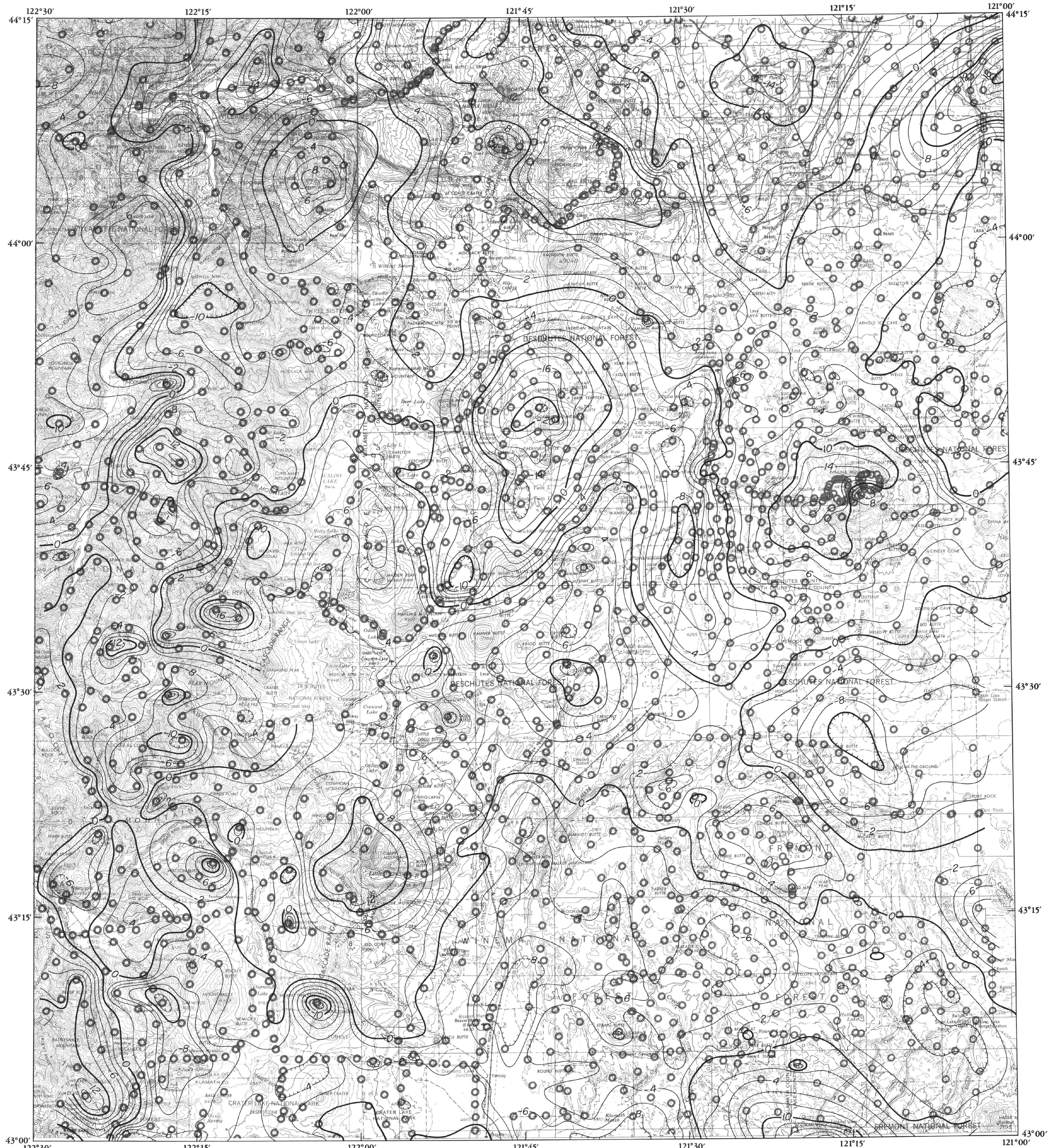


RESIDUAL GRAVITY ANOMALY MAP
Cascade Mountain Range, Central Oregon

PLATE II



Estimated uncertainty in measurements 1.0 milligal
Theoretical gravity: IGF(1930)
Reduction density 2.43 g/cc
Regional components greater than 90 km are removed

Base map from USGS 1:250,000 series:
Roseburg (NK 10-2), Crescent (NK 10-3),
Salem (NL 10-11), Bend (NL 10-12)
Topographic contour interval 200 feet with
supplementary contours at 100 foot intervals

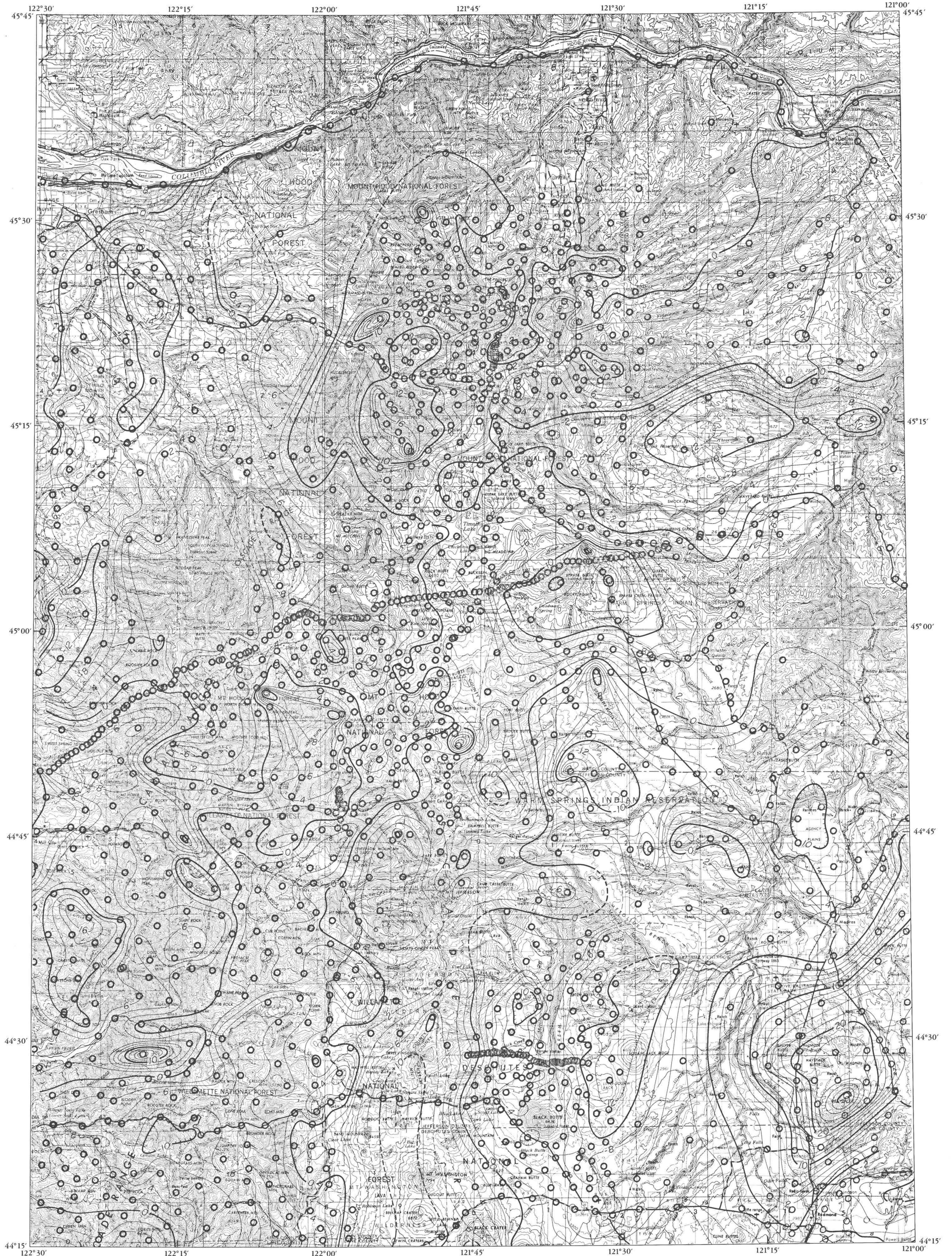
SCALE 1:250,000
5 0 5 10 Miles
5 0 5 10 15 Kilometers
Gravity Anomaly Contour Interval 2 Milligals
Gravity stations are shown as open circles
TRANSVERSE MERCATOR PROJECTION



Prepared by R.W. Couch, G.S. Pitts,
M. Gemperle, C. Veen, and D. Braman
GEOPHYSICS GROUP, OREGON STATE UNIVERSITY
November 1981
RESIDUAL GRAVITY ANOMALY:
CENTRAL OREGON CASCADES

RESIDUAL GRAVITY ANOMALY MAP
Cascade Mountain Range, Northern Oregon

PLATE I



Estimated uncertainty in measurements 1.0 milligal
Theoretical gravity: IGF(1930)
Reduction density 2.43 g/cc
Regional components greater than 90 km are removed

Base map from USGS 1:250,000 series:
Vancouver (NL 10-8), The Dalles (NL 10-9),
Salem (NL 10-11), Bend (NL 10-12)
Topographic contour interval 200 feet with
supplementary contours at 100 foot intervals

SCALE 1:250,000
5 0 5 10 Miles
5 0 5 10 Kilometers

Gravity Anomaly Contour Interval 2 Milligals
Gravity stations are shown as open circles
TRANSVERSE MERCATOR PROJECTION



Prepared by R.W. Couch, G.S. Pitts,
M. Gempferle, C. Vein, and D. Braman
GEOPHYSICS GROUP, OREGON STATE UNIVERSITY
November 1981

RESIDUAL GRAVITY ANOMALY:
NORTHERN OREGON CASCADES

PLATE III

RESIDUAL GRAVITY ANOMALY MAP
Cascade Mountain Range, Southern Oregon

