

STATE OF OREGON
DEPARTMENT OF GEOLOGY AND MINERAL INDUSTRIES
DONALD A. HULL, STATE GEOLOGIST

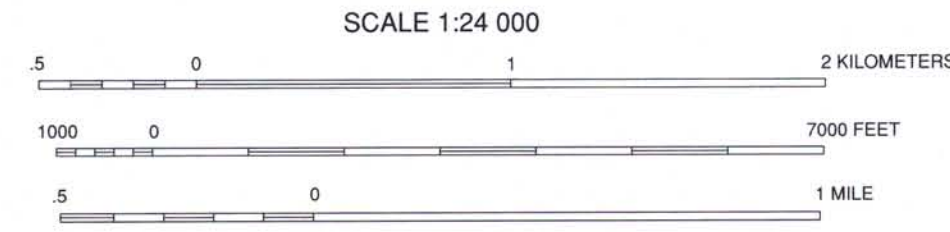
Geologic Map of the Mount Gurney Quadrangle, Douglas and Coos Counties, Oregon 1994

GMS-85

Geologic Map of the Mount Gurney Quadrangle,
Douglas and Coos Counties, Oregon
By Thomas J. Wiley and others



Base map by U.S. Geological Survey
Control by USGS, NOS/NOAA
Lambert conformal conic projection
1927 North American datum
10,000-foot grid based on Oregon coordinate system, south zone
1000-meter Universal Transverse Mercator grid ticks, zone 10 shown

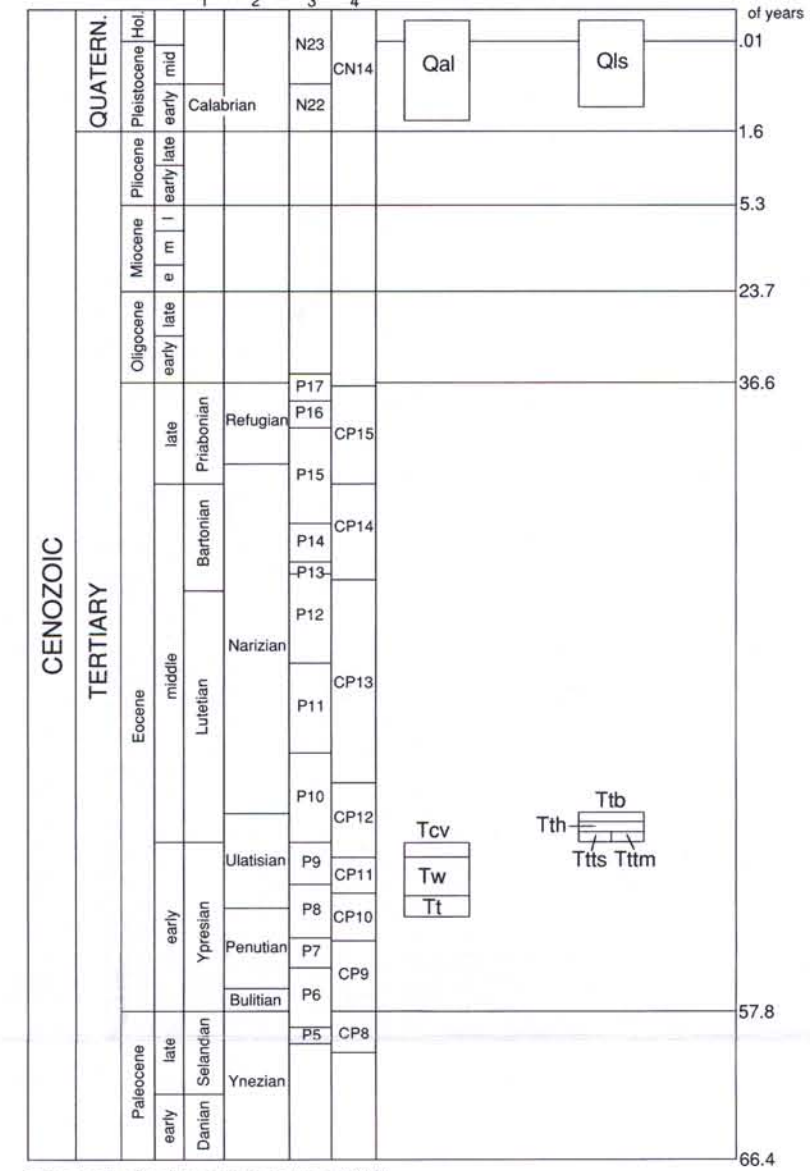


CONTOUR INTERVAL 40 FEET
NATIONAL GEODETIC VERTICAL DATUM OF 1929



Geology by Thomas J. Wiley, George R. Priest, and
Gerald L. Black, Oregon Department of Geology
and Mineral Industries
Field work conducted 1992-1994
Cartography by Paul E. Staub
The geologic information on this map is available in digital formats

TIME ROCK CHART



Time scale after Berggren and others (1985).
1 Standard ages
2 Biostratigraphic zones from Mallow (1959) and Almgren (1988)
3 Planktonic foraminifera zones from Berggren and others (1985)
4 Calcareous nanoplankton zones from Berggren and others (1985) and Bukry and Snawley (1988)

EXPLANATION

(see accompanying text for complete geologic explanation)

QUATERNARY DEPOSITS

- Qal Alluvium (Holocene and Pleistocene)
- Qls Landslide deposits (Holocene and Pleistocene)

ANGULAR UNCONFORMITY

EOCENE SEDIMENTARY ROCKS

Tyee Formation (middle Eocene; Ulatisian) Divided into the following members:

- Tib Baughman Member of Baldwin (1974) (middle Eocene; Ulatisian)
- Tth Hubbard Creek Member of Baldwin (1974) (middle Eocene; Ulatisian)

Tyee Mountain Member of Baldwin (1974) (middle Eocene; Ulatisian)
Divided into the following subunits:

- Ttts Sandstone with minor siltstone and mudstone
- Ttmm Mudstone with minor fine-grained sandstone

LOCAL UNCONFORMITY

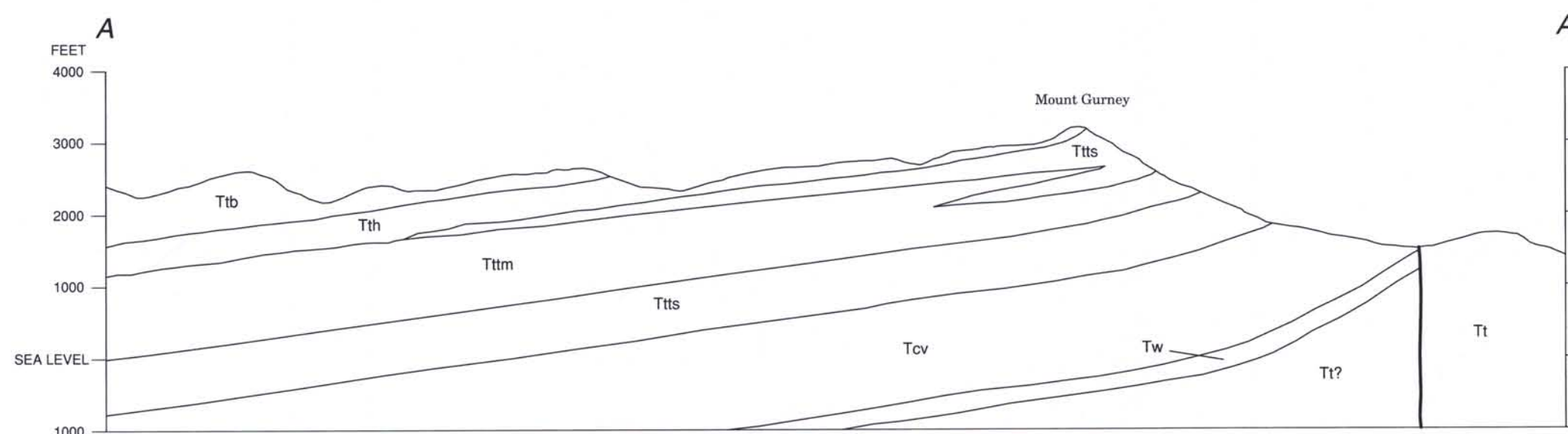
Umpqua Group of Niem and others (1992) (lower Eocene)
Divided into the following formations:

- Tcv Camas Valley Formation of Niem and others (1992) (lower Eocene; Ulatisian)
- Tw White Tail Ridge Formation of Niem and others (1992) (lower Eocene; Ulatisian)
- Tt Tenmile Formation of Niem and others (1992) (lower Eocene; Ulatisian and Penutian)

MAP SYMBOLS

- Contact--Approximately located
- Fault--Dashed where inferred; dotted where concealed; ball and bar on downthrown side
- Syncline--Dashed where inferred
- Anticline--Dashed where inferred
- Overturned syncline
- Strike and dip of beds
- Strike and dip of beds--Approximate
- Strike of vertical beds
- Strike and dip of joint
- Strike of vertical joint
- Horizontal bed
- Direction of landslide movement

GEOLOGIC CROSS SECTION



Funded in part by contributions from the Douglas County Industrial
Development Board, GCO Minerals Company, Oregon Department of
Geology and Mineral Industries, State of Oregon Lottery Funds, Menasha
Corporation, Oregon Natural Gas Development Corporation, Seneca Timber
Company, U.S. Bureau of Land Management, USDA Forest Service, Weyerhaeuser
Corporation, and the National Geologic Mapping Program (STATEMAP).