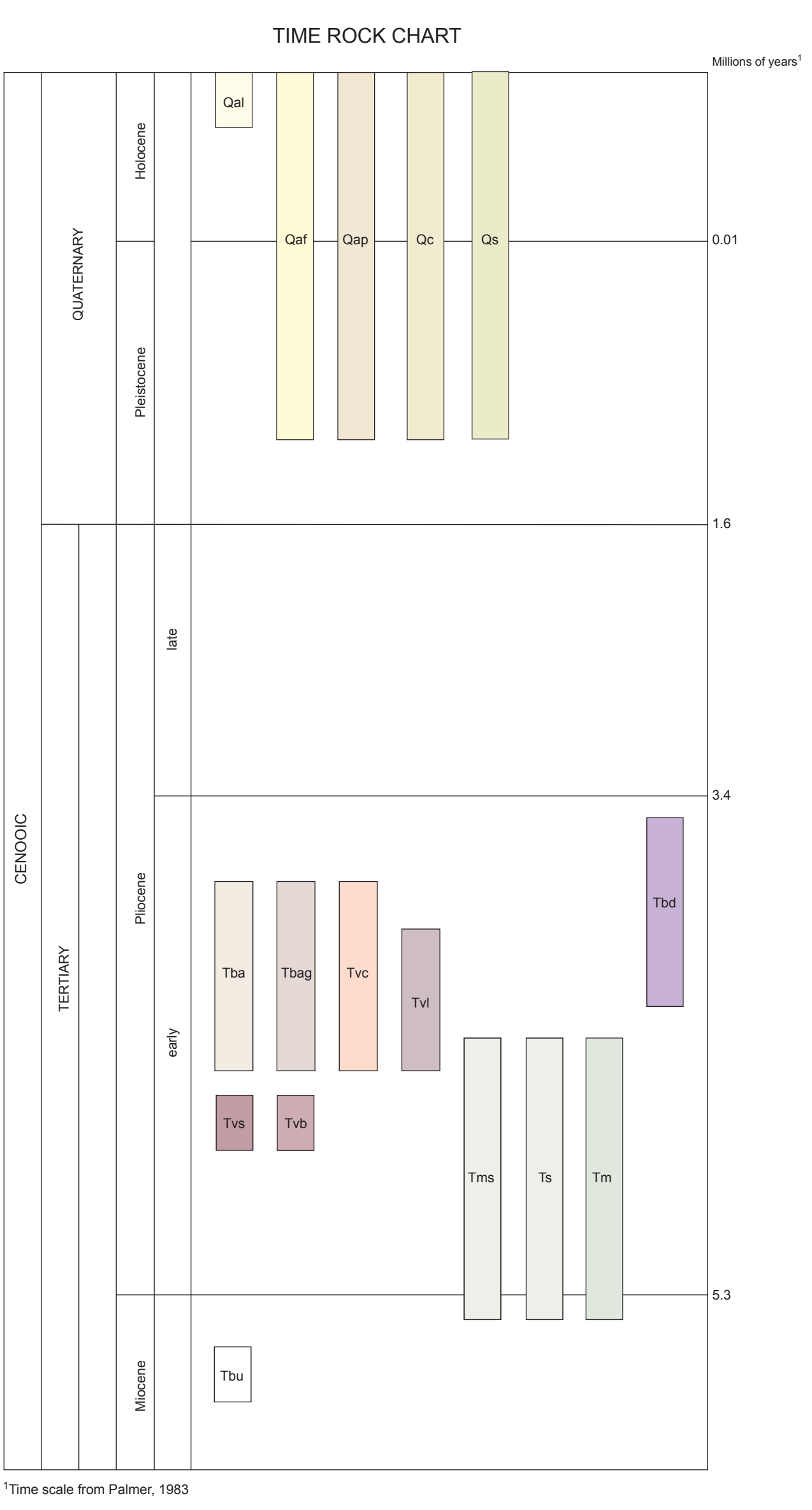
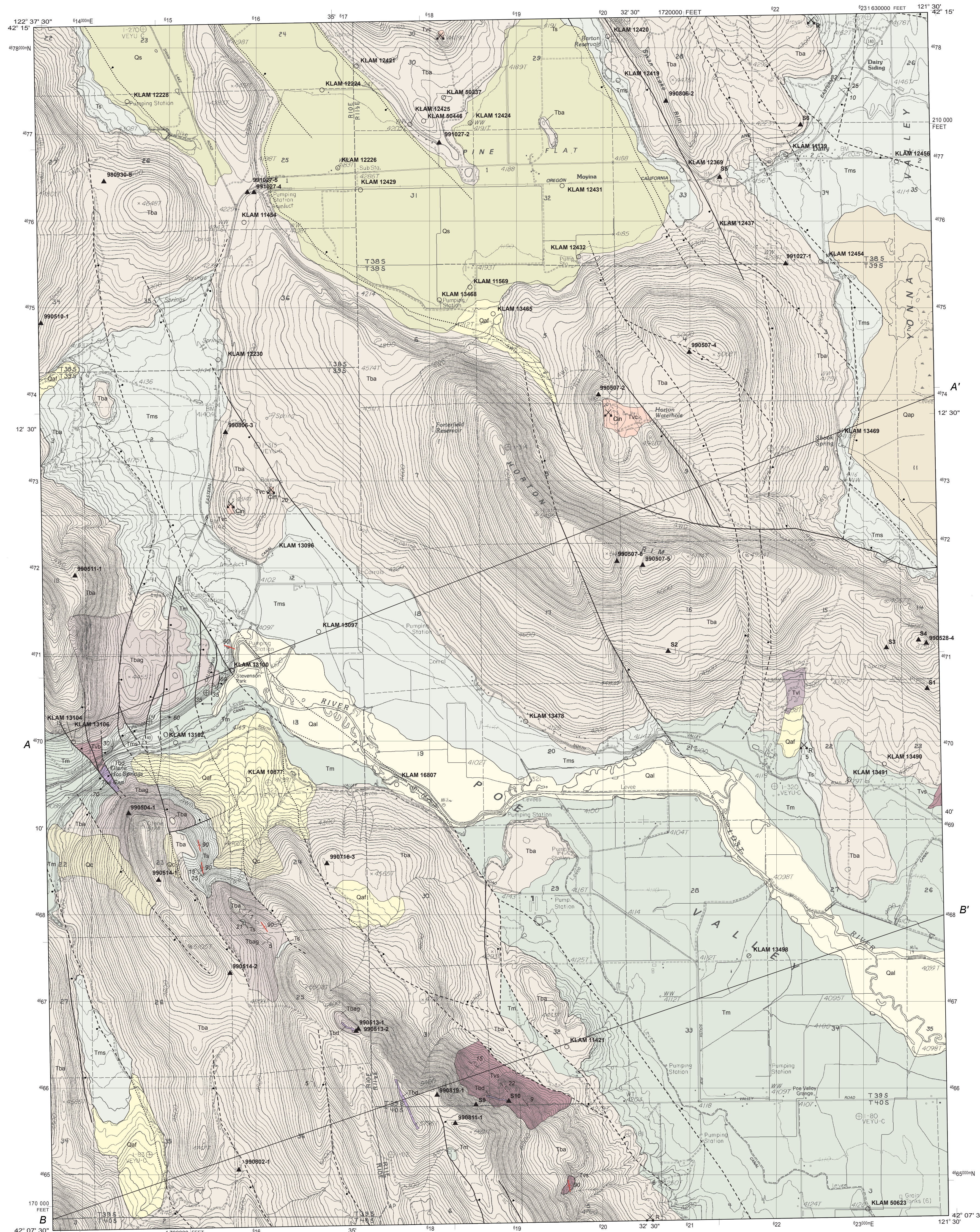


Geologic Map of the Dairy Quadrangle, Klamath County, Oregon

2003



EXPLANATION OF MAP UNITS

- (See accompanying text for complete descriptions of geologic units)
- Surficial Units**
- Qal Alluvium (Holocene)
 - Qaf Alluvial fan deposits (Holocene and Pleistocene)
 - Qap Playa deposits (Holocene and Pleistocene)
 - Qc Colluvium (Holocene and Pleistocene)
 - Qs Lacustrine sediments (Holocene-Pleistocene)
- Volcanic Units**
- Tba Basaltic andesite (Pliocene)
 - Tbag Basaltic andesite agglutinate (Pliocene)
 - Tvc Basaltic andesite cinder deposits (Pliocene)
 - Tvl Lahar deposits (Pliocene)
 - Tvo Volcanic breccia (Pliocene)
 - Tvs Volcanic surge deposits (Pliocene)
- Intrusions**
- Tms Mudstone, siltstone, and sandstone (Pliocene and Miocene)
 - Ts Sandstone (Pliocene and Miocene)
 - Tm Diatomaceous and tuffaceous mudstone (Pliocene and Miocene)
 - Tbu Basaltic andesite (shown only in cross sections) (Miocene?)
 - Tbd Basaltic andesite dikes (Pliocene)

Geology by Frank R. Hadley, Oregon Department of Geology and Mineral Industries

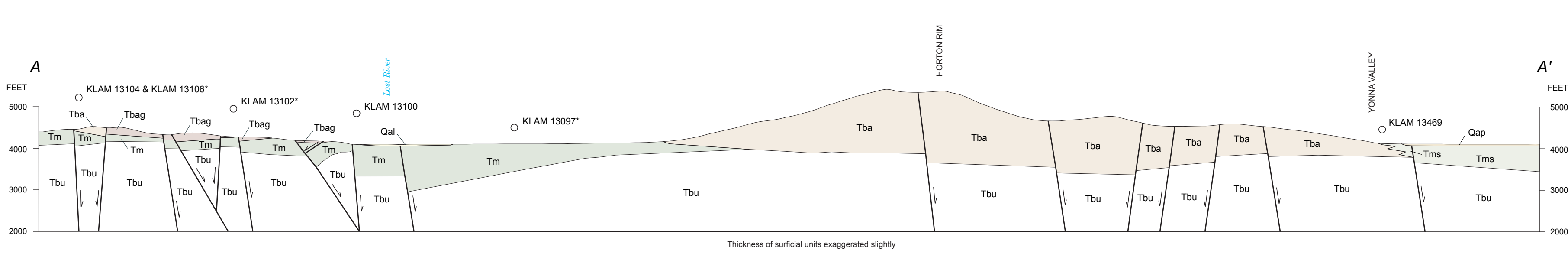
Field work conducted in 1999

Reviewed by David R. Sherrod, U.S. Geological Survey

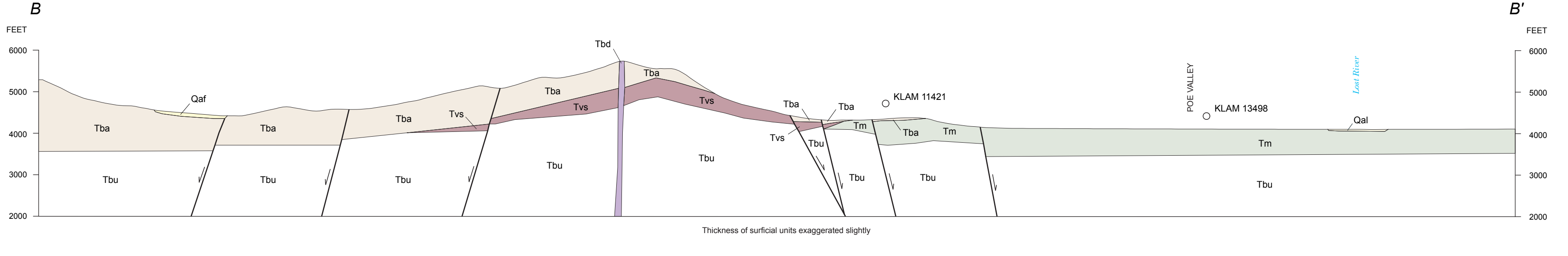
Acknowledgments: I thank Tom Cottingham, BLM, who lent aerial photographs. Field discussions with Jerry Groudin (OWRD), Margi Jenks and Jerry Black (DOGAMI), and Kevin Knutson (USGS) were invaluable to the project. The field assistance of Robert Newman (GSU and DOGAMI) is also appreciated. Whole-rock XRF analyses were provided by Stanley A. Mertzman, Franklin and Marshall College, Lancaster, PA. New isotopic ages from the Dairy and Bonanza quadrangles were provided by Robert A. Duncan, Oregon State University.

Cartography by Clark Niewendorp

GEOLOGIC CROSS SECTION A-A'



GEOLOGIC CROSS SECTION B-B'



- MAP SYMBOLS**
- Contact—Approximately located
 - Fault—Solid where certain, dashed where approximately located, dotted where contoured; ball and bar on downthrown block; arrow shows direction and plunge of lineation on fault where known
 - Dike—Basaltic andesite dike (unit Tbd) is too narrow to show as an area at map scale; tick with dip value indicates a measured dip direction and magnitude
 - Inclined bedding—Showing strike and direction of dip
 - Inclined bedding—Showing approximate strike and direction of dip
 - Horizontal bedding
 - Water well—Type of use unspecified; wells designated with Oregon Water Resources Department's well identification number. In cross section A-A', asterisk on well log identification number indicates the well location was determined as center of quarter-quarter section from well log. Wells hovering above cross sections have been projected and most are within 300 ft of section line
 - Geochronology and geochronology sample location with map number—See Table 1.1 and 1.3 in accompanying text
 - Sand, Gravel; commodity type: R = crushed rock, stone; Cta = cinders

This map is available from:

The Nature of the Northwest Information Center
300 NE Oregon Street #5
Portland, OR 97232
503.972.2750 www.naturenw.org
and the Salem City (541.523.3133) and Grants
Pass (541.475.2496), Field Offices of the Oregon
Department of Geology and Mineral Industries