

OREGON DEPARTMENT OF GEOLOGY AND MINERAL INDUSTRIES
INTERPRETIVE MAP SERIES 24

GEOLOGIC HAZARDS, EARTHQUAKE AND LANDSLIDE HAZARD MAPS, AND FUTURE EARTHQUAKE DAMAGE
ESTIMATES FOR SIX COUNTIES IN THE MID/SOUTHERN WILLAMETTE VALLEY INCLUDING YAMHILL, MARION, POLK,
BENTON, LINN, AND LANE COUNTIES AND THE CITY OF ALBANY, OREGON

APPENDIX I:
VOLCANIC HAZARD MAPS

The U.S. Geological Survey has published descriptions of volcanic hazards in the Mount Jefferson and Three Sisters regions. Figure I1 is a map of the eastern half of the study area showing locations of volcanoes. The three oversize maps that follow in this appendix are reproduced from these publications:

Scott, W. E., Iverson, R. M., Schilling, S. P., and Fisher, B. J., 1999, Volcano hazards in the Three Sisters region, Oregon: U.S. Geological Survey Open-File Report 99-437, 14 p., 1 plate.

<http://geopubs.wr.usgs.gov/open-file/of99-437/>

Plate 1: Volcano hazards in the Three Sisters region, Oregon

Walder, J. S., Gardner, C. A., Conrey, R. M., Fisher, B. J., and Schilling, S. P., 1999, Volcano hazards in the Mount Jefferson region, Oregon: U.S. Geological Survey Open-File Report 99-24, 14 p., 2 plates.

<http://geopubs.wr.usgs.gov/open-file/of99-24/>

Plate 1 and Plate 2: Volcano hazards in the Mount Jefferson region, Oregon

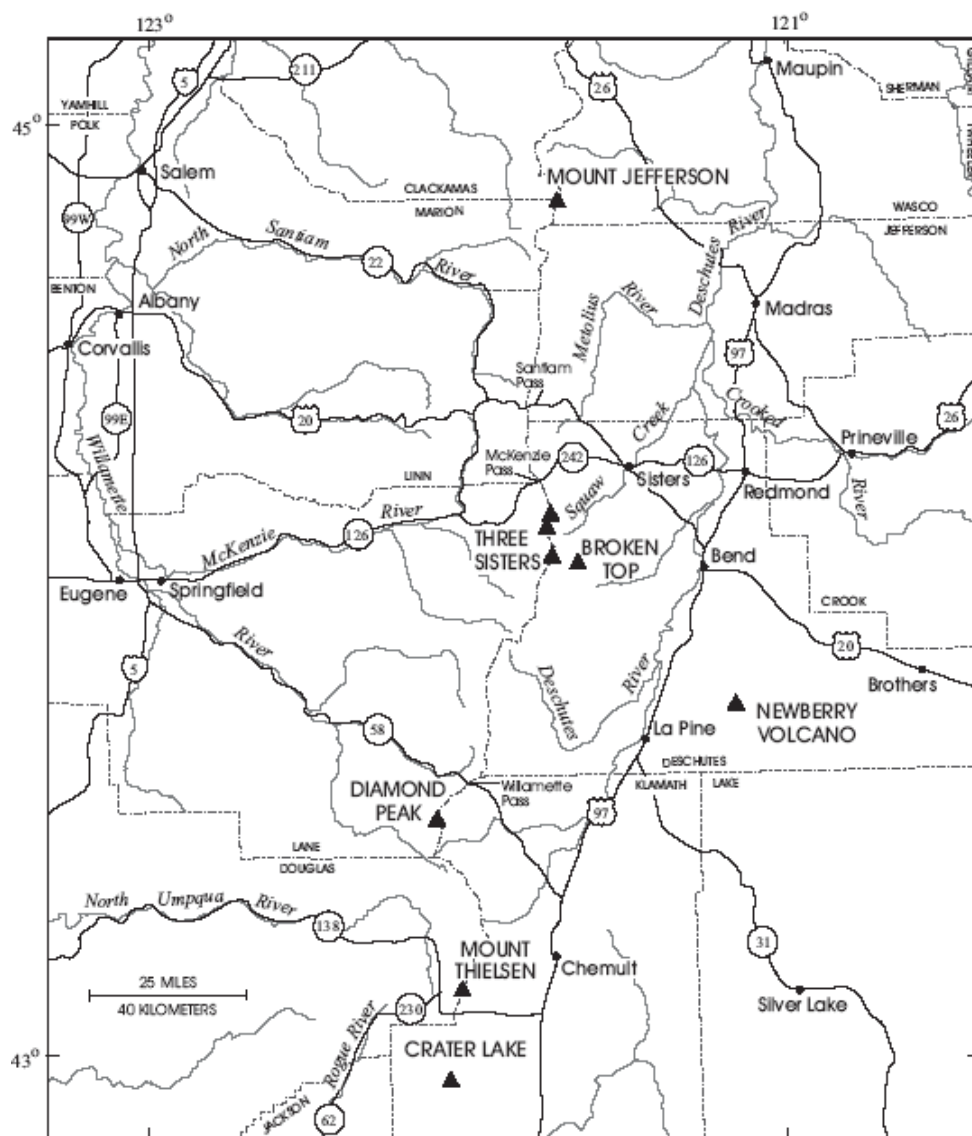
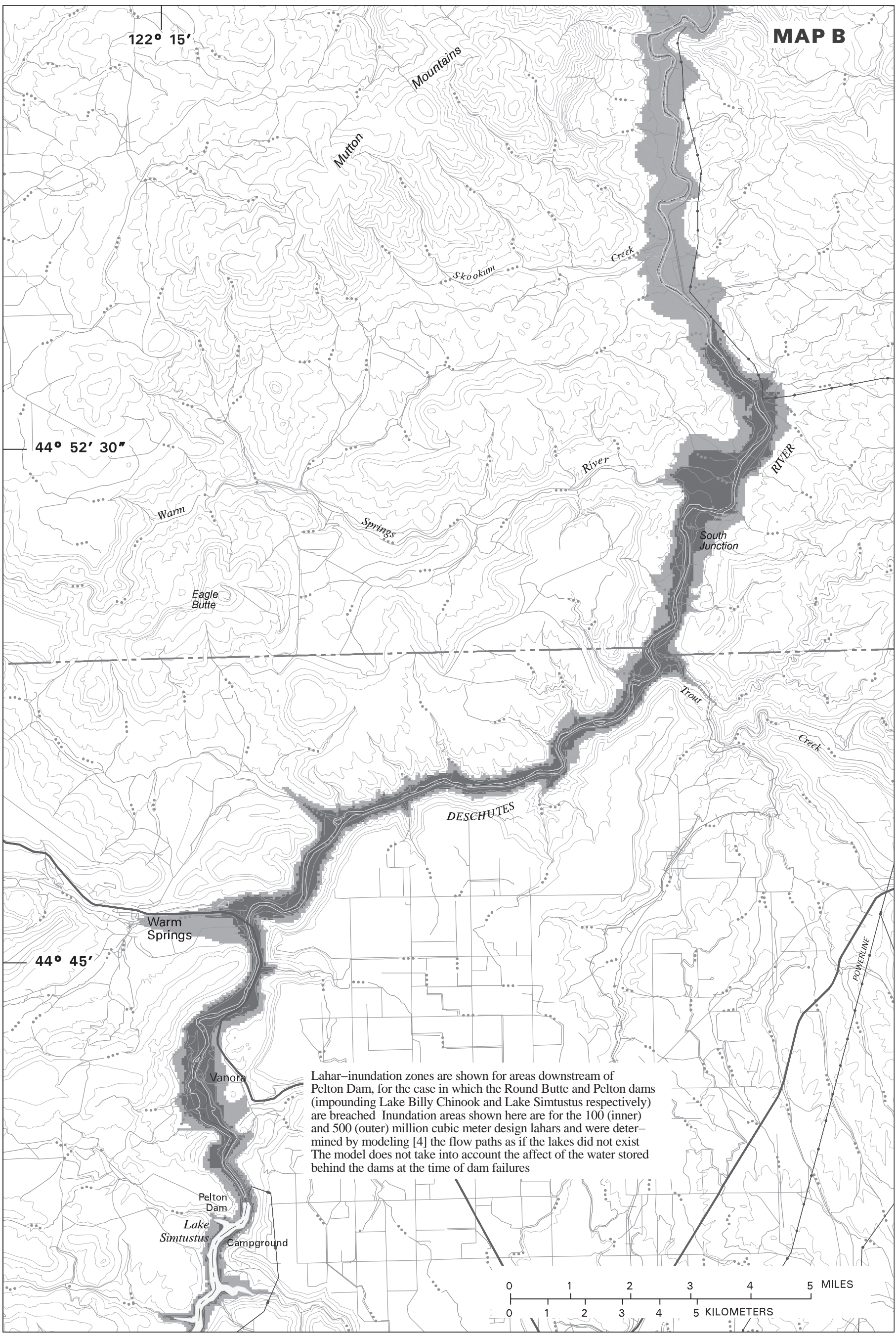
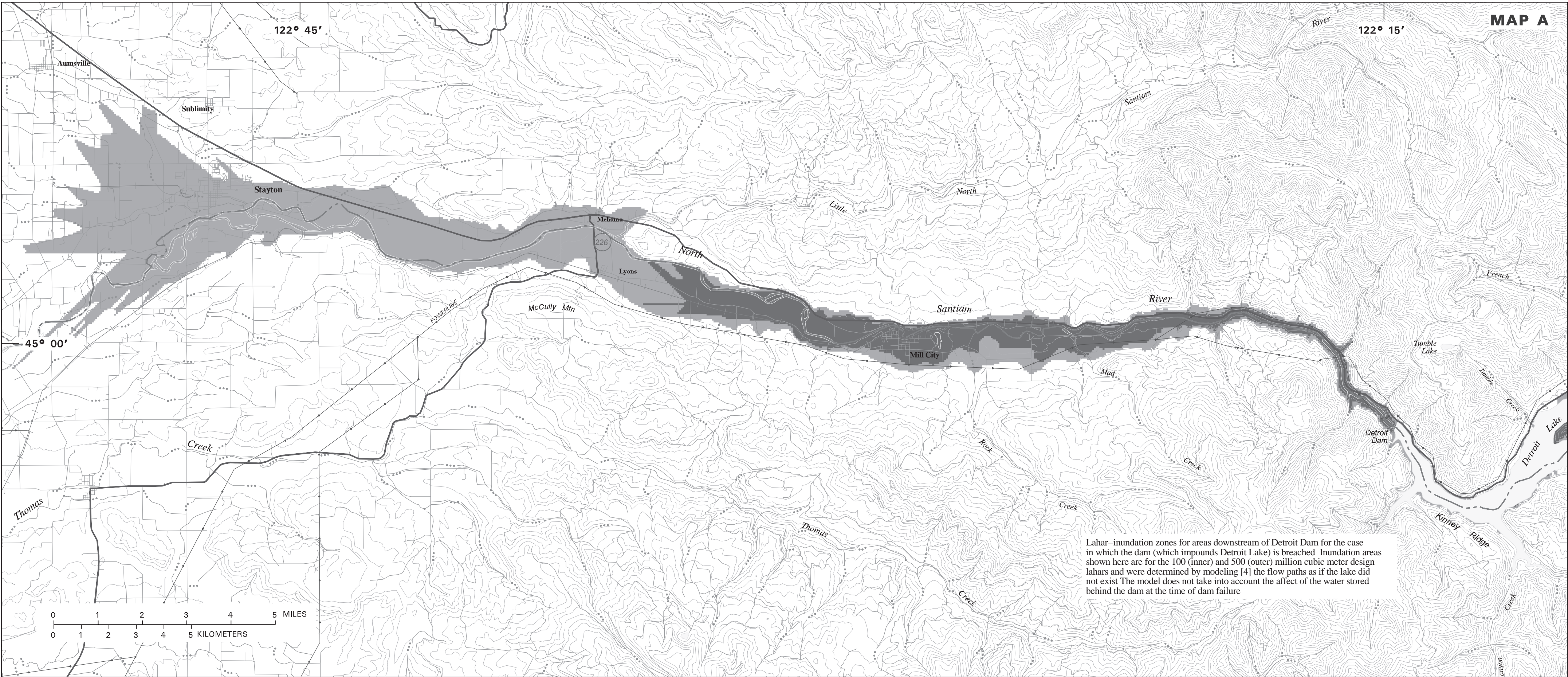
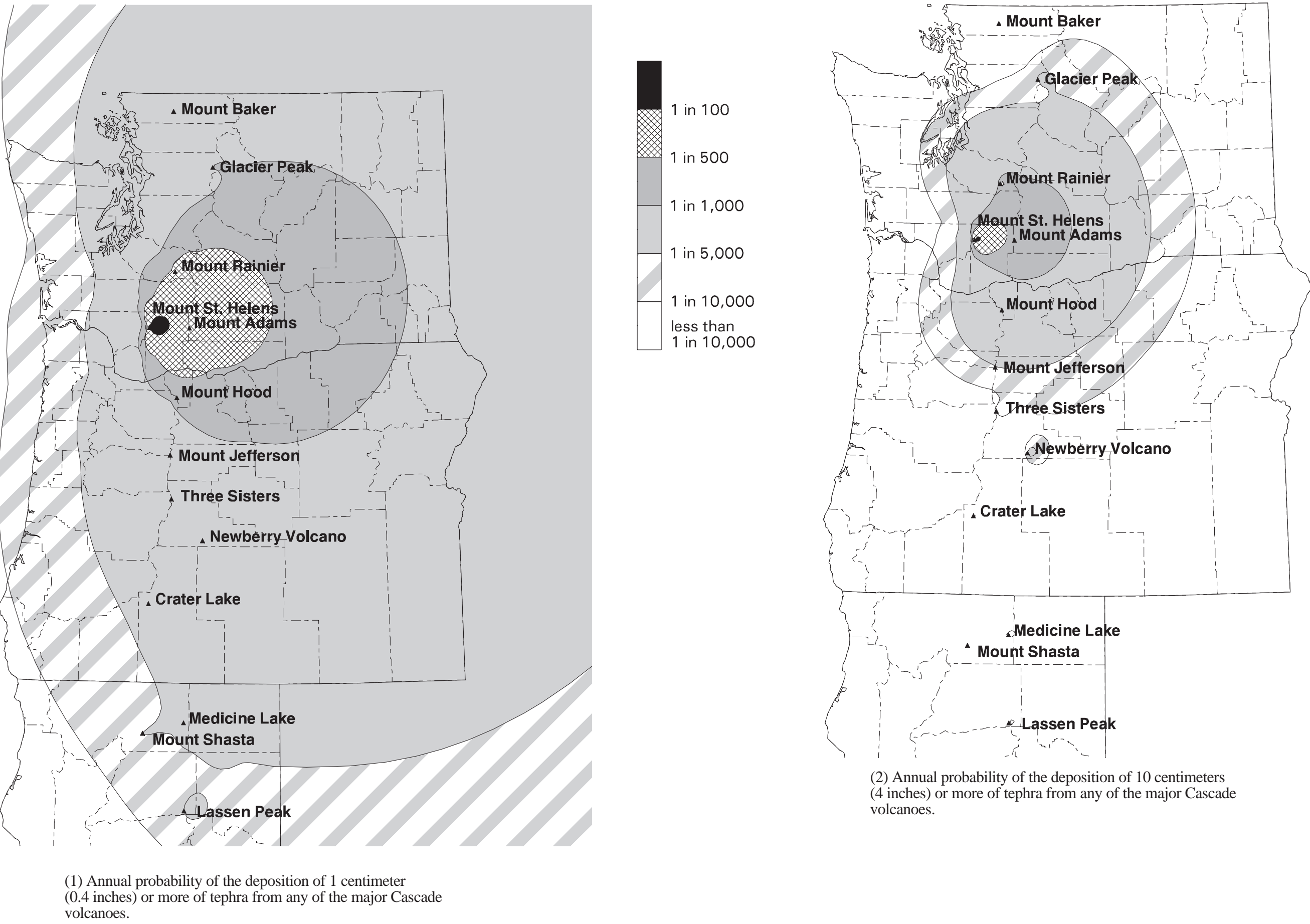
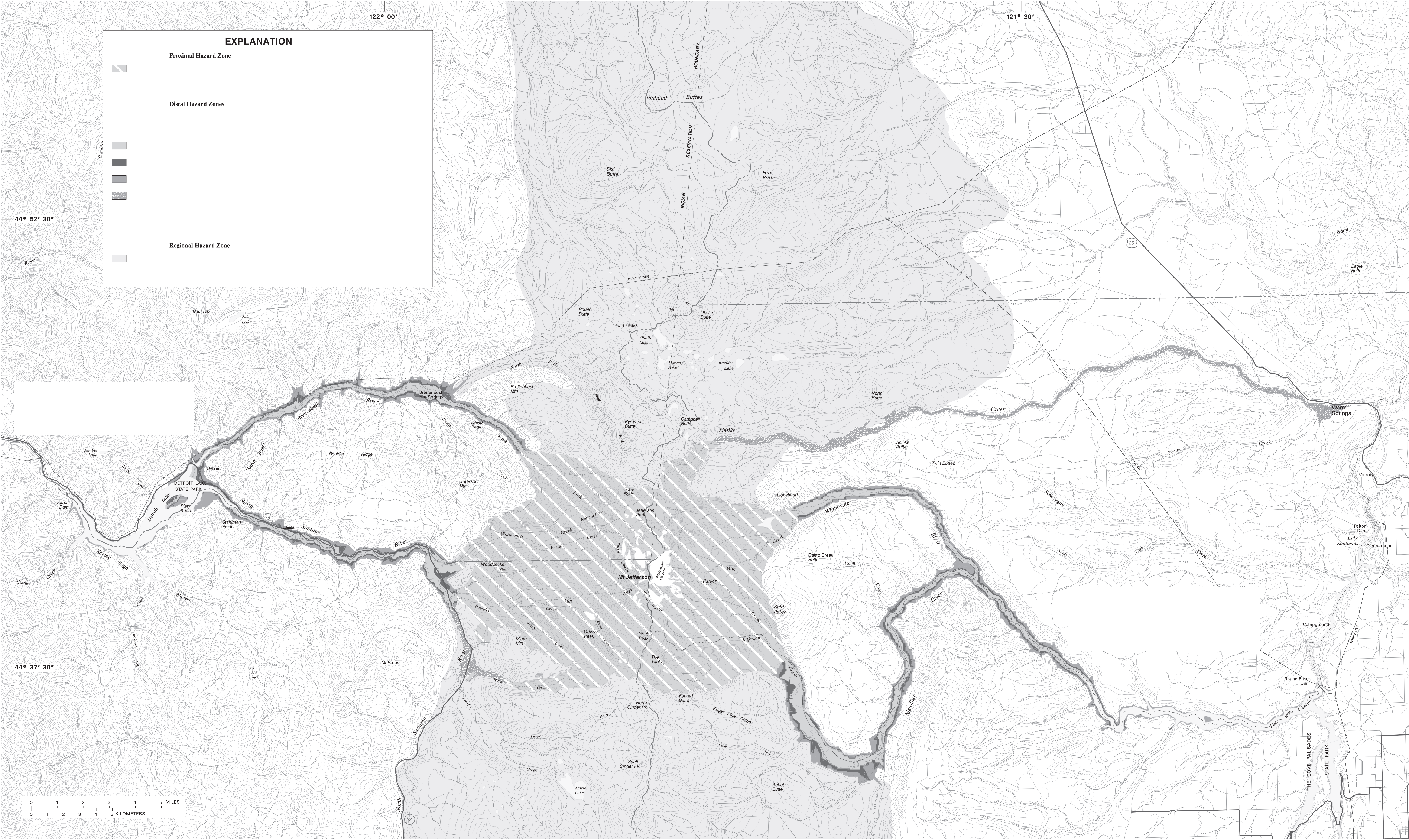


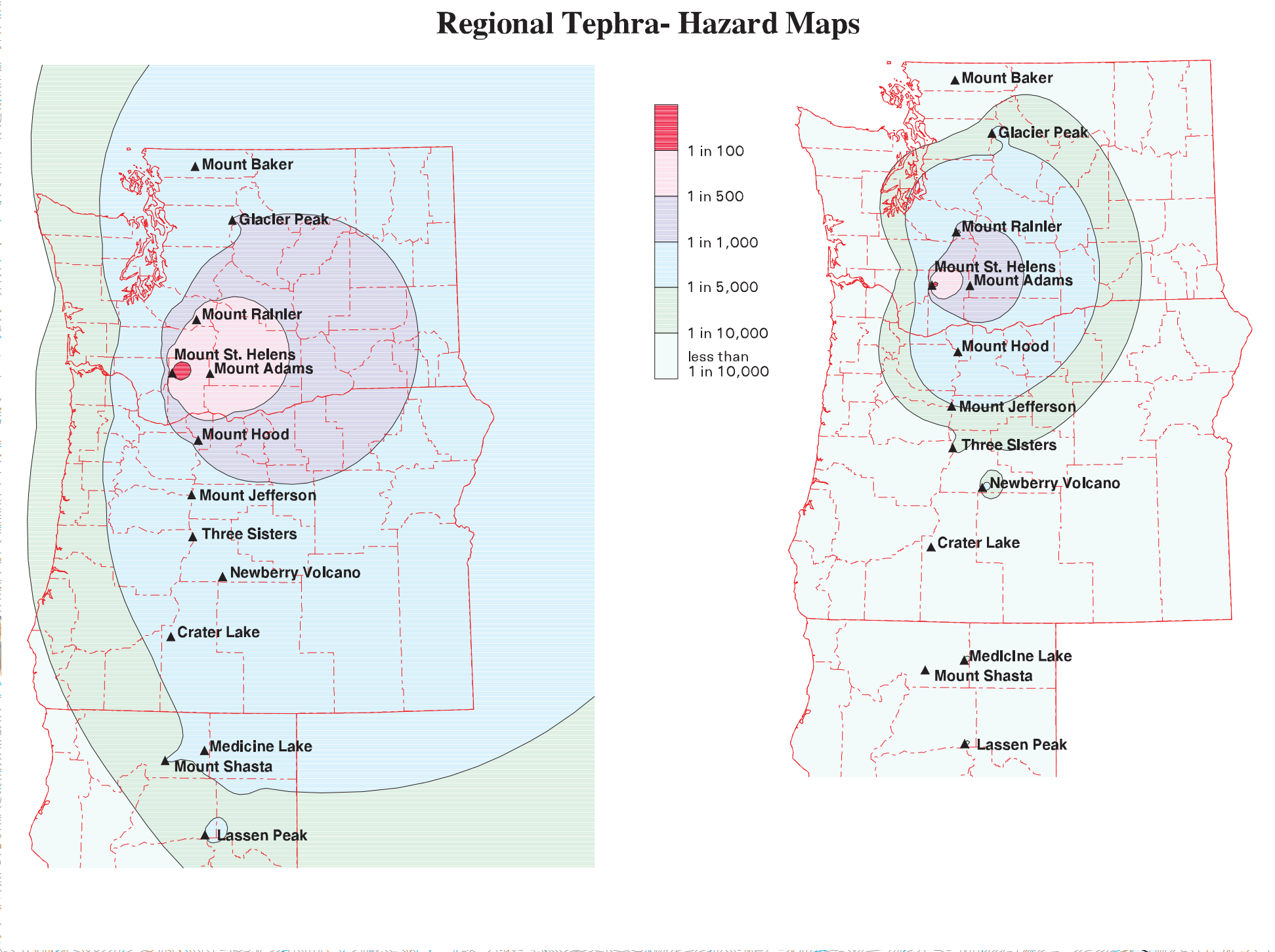
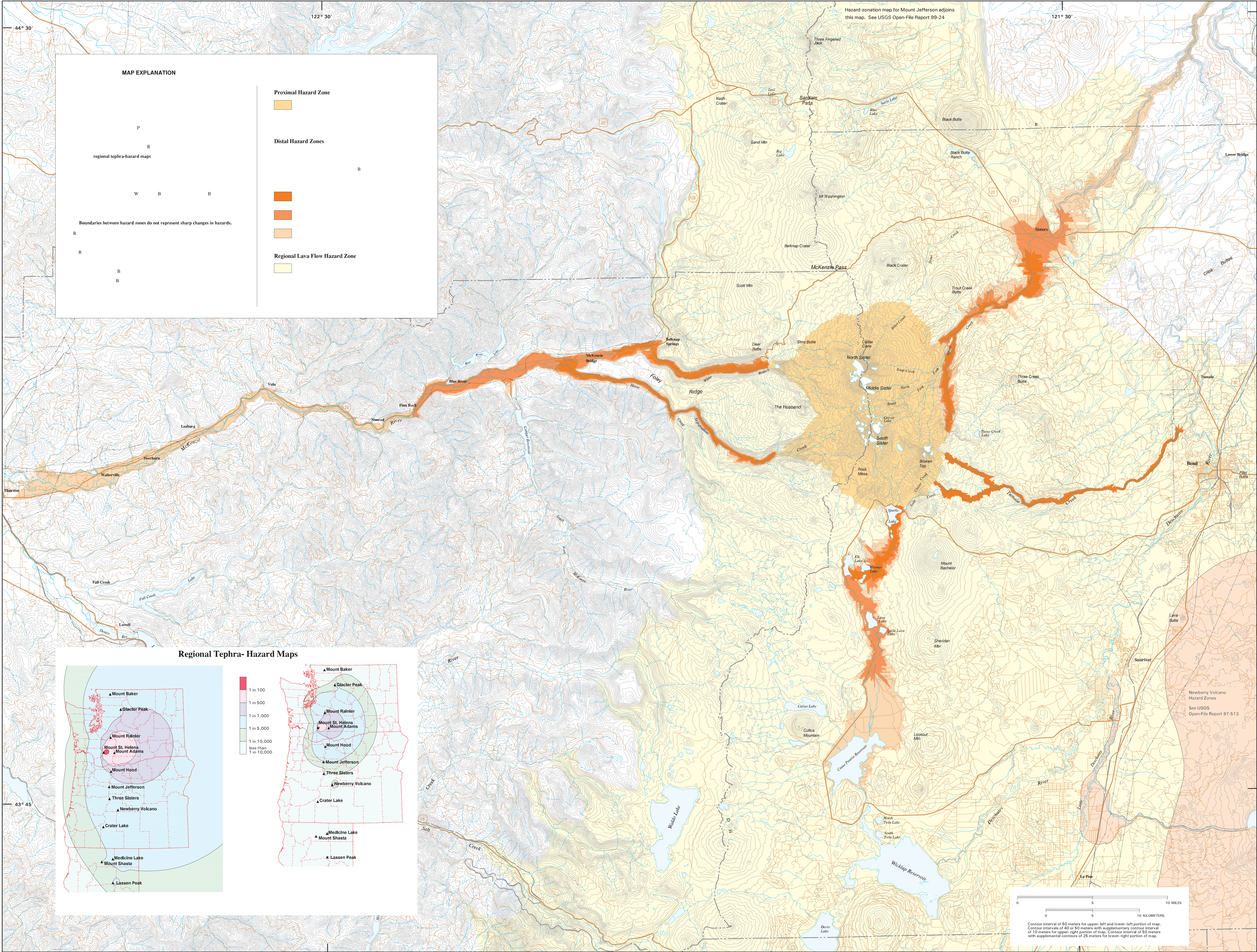
Figure I1. Map of the eastern half of the study area showing locations of volcanoes (Scott and others, 1999).



Regional Tephra-fall Maps



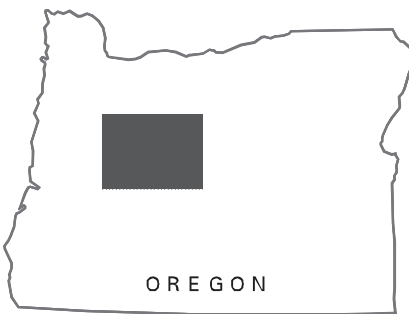




Base compiled in digital form by Steven P. Schilling from U.S. Geological Survey, Bend (1980), La Pine (1988), Oakridge (1983) and McKenzie River (1983) 1:100,000 scale maps.
Data for hydrography, culture, transportation, and boundaries from U.S. Geological Survey (EROS) Data Center Digital Line Graph files. Digital Line Graph hydrography (topographic contours) created from U.S. Geological Survey blackline clear-films by Peter Iverson, Inc., Portland, Oregon.
Universal Transverse Mercator projection, Zone 10
1927 North American Datum

VOLCANO HAZARDS IN THE THREE SISTERS REGION, OREGON

By
William E. Scott, Richard M. Iverson, Steven P. Schilling, Bruce J. Fisher



This map is preliminary and has not been reviewed for conformity with U.S. Geological Survey editorial standards or with the North American Stratigraphic Code. Any use of trade, product, or firm names is for descriptive purposes only and does not imply endorsement by the U.S. Government.