

# OREGON DEPARTMENT OF GEOLOGY AND MINERAL INDUSTRIES

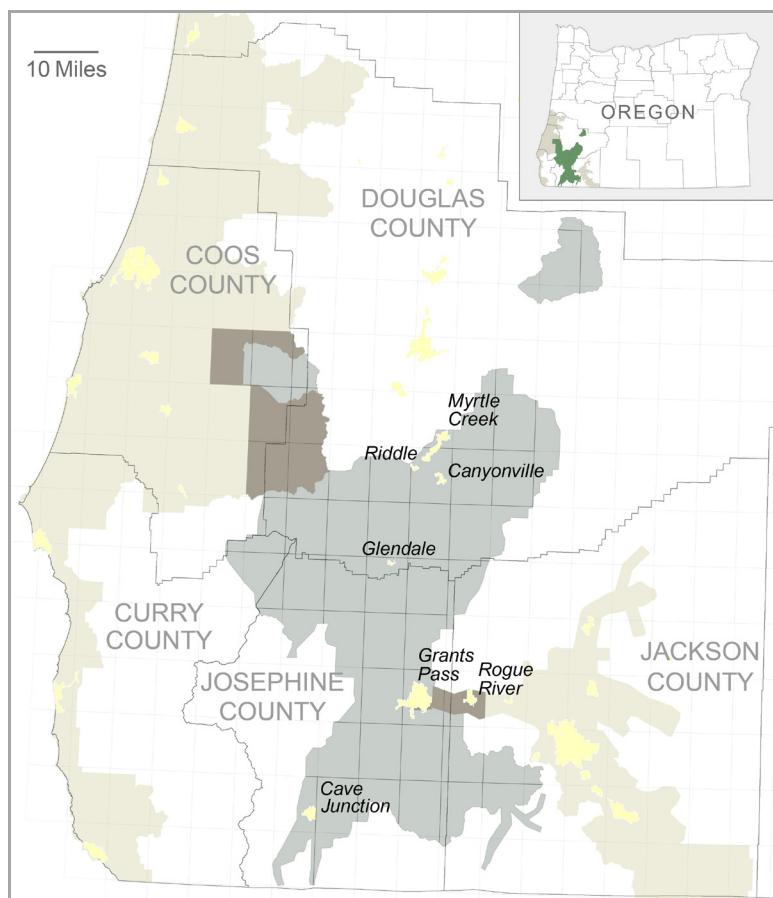
Vicki S. McConnell, State Geologist



NEWS RELEASE: June 5, 2013

## Additional lidar data available for Rogue Basin area

Portland, Oregon: The Oregon Department of Geology and Mineral Industries (DOGAMI) is releasing more lidar data in the agency's Lidar Data Quadrangle series. The new publications cover portions of Josephine, Douglas, Jackson, Curry, and Coos counties. Lidar, a laser-mapping technology, allows for amazingly detailed and accurate mapping of the earth's surface.



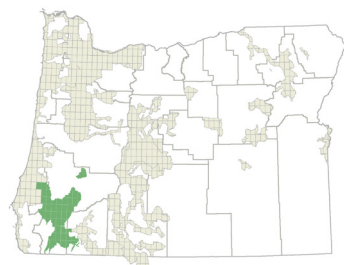
### ***DOGAMI Lidar Data Quadrangle (LDQ) Series coverage for Rogue Basin area***

**Gray** – newly released data for Rogue Basin; rectangles are 7.5' U.S. Geological Survey quadrangles.

**Dark gray** – South Coast and Rogue Valley LDQ data incorporated into Rogue Basin release.

**Tan** – previously released LDQ data for South Coast and Rogue Valley areas.

**Pale yellow** – urban growth boundaries.



### ***DOGAMI Lidar Data Quadrangle (LDQ) Series statewide coverage as of 6/5/13.***

**Green** – newly released data for Rogue Basin area.  
**Tan** – previously released LDQ data.

*DOGAMI's mission is to provide earth science information and regulation to make Oregon safe and prosperous.*

### **Media contact: Carol DuVernois**

carol.duvernois@state.or.us

800 NE Oregon St., #28,  
Ste. 965

Portland, OR 97232

Phone: (971) 673-1555

Fax: (971) 673-1562

[www.OregonGeology.org](http://www.OregonGeology.org)

### **Mineral Land Regulation and Reclamation Program**

229 Broadalbin St. SW  
Albany, OR 97321

Phone: (541) 967-2039

Fax: (541) 967-2075

[info@mlrr.oregongeology.com](mailto:info@mlrr.oregongeology.com)

Gary W. Lynch,  
Assistant Director

### **Coastal Field Office**

313 SW 2nd, Ste. D

Newport, OR 97365

Phone: (541) 574-6642

Fax: (541) 265-5241

Jonathan C. Allan,  
Coastal Team Leader

### **Eastern Oregon Field Office**

Baker County Courthouse

1995 3rd St., Ste. 130

Baker City, OR 978149

Phone: (541) 523-3133

Fax: (541) 523-5992

Jason D. McClaughry,  
Regional Geologist

### **Nature of the Northwest Information Center**

800 NE Oregon St., Ste. 965

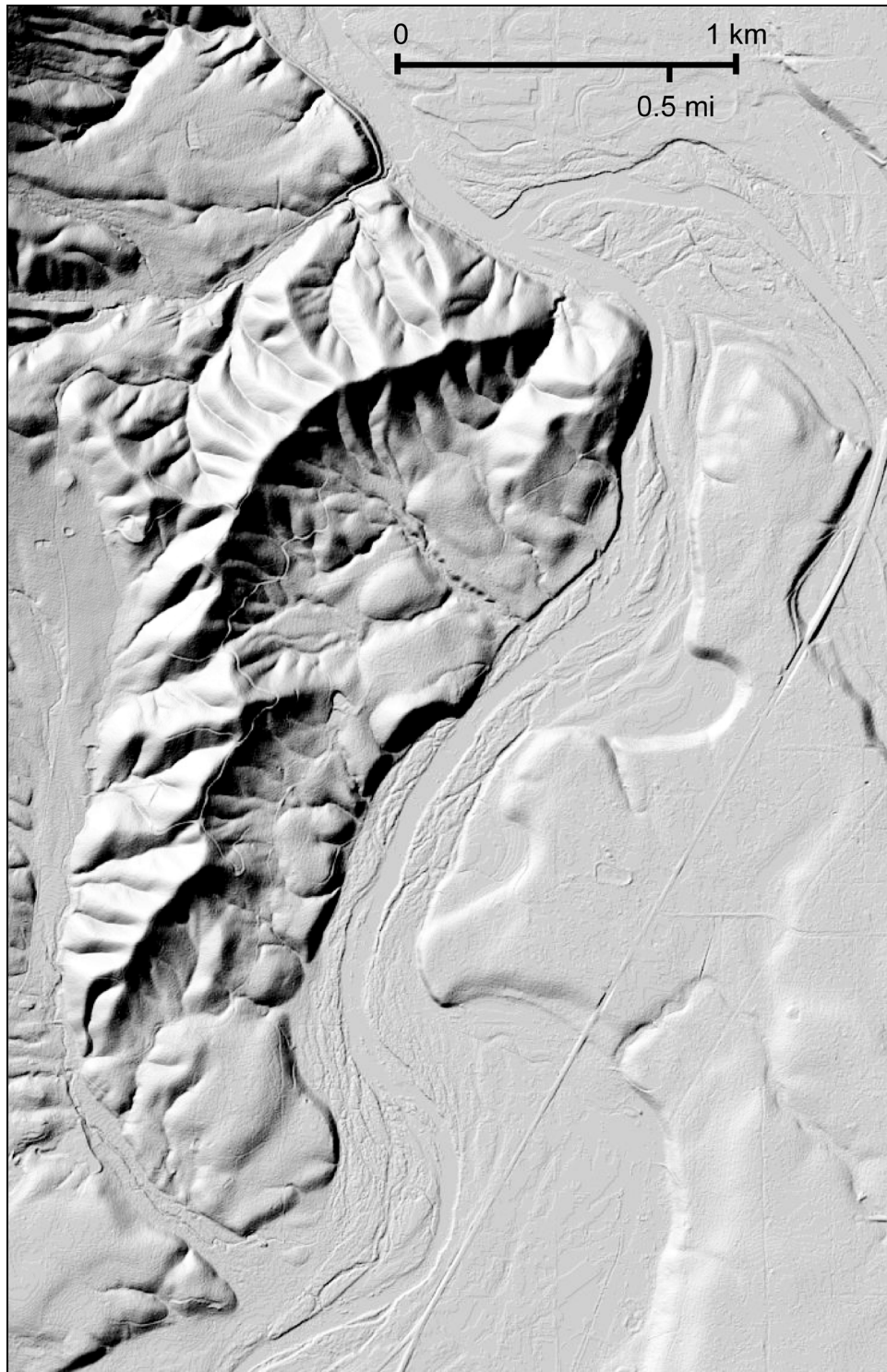
Portland, Oregon 97232

(971) 673-2331

Email: [info@naturenw.org](mailto:info@naturenw.org)

Web: [www.NatureNW.org](http://www.NatureNW.org)

Donald J. Haines, Manager



[Lidar Data Viewer](#) bare-earth imagery of Illinois River Forks State Park just south of Cave Junction, Oregon. The park's ridge and river trails, the forks of the Illinois River, and the trace of Highway 199 (east of river) can be seen along with amazingly detailed surface topography.

Imagery of these data can be viewed online along with other lidar coverage for the state by using the DOGAMI lidar data viewer:

<http://www.oregongeology.org/sub/lidardataviewer/index.htm>

*DOGAMI's mission is to provide earth science information and regulation to make Oregon safe and prosperous.*

**Media contact:  
Carol DuVernois**

[carol.duvernois@state.or.us](mailto:carol.duvernois@state.or.us)

800 NE Oregon St., #28,  
Ste. 965

Portland, OR 97232

Phone: (971) 673-1555

Fax: (971) 673-1562

[www.OregonGeology.org](http://www.OregonGeology.org)

---

**Mineral Land Regulation and  
Reclamation Program**

229 Broadalbin St. SW

Albany, OR 97321

Phone: (541) 967-2039

Fax: (541) 967-2075

[info@mlrr.oregongeology.com](mailto:info@mlrr.oregongeology.com)

Gary W. Lynch,  
Assistant Director

**Coastal Field Office**

313 SW 2nd, Ste. D

Newport, OR 97365

Phone: (541) 574-6642

Fax: (541) 265-5241

Jonathan C. Allan,  
Coastal Team Leader

**Eastern Oregon Field Office**

Baker County Courthouse

1995 3rd St., Ste. 130

Baker City, OR 978149

Phone: (541) 523-3133

Fax: (541) 523-5992

Jason D. McClaughry,  
Regional Geologist

**Nature of the Northwest  
Information Center**

800 NE Oregon St., Ste. 965

Portland, Oregon 97232

(971) 673-2331

Email: [info@naturenw.org](mailto:info@naturenw.org)

Web: [www.NatureNW.org](http://www.NatureNW.org)

Donald J. Haines, Manager

## OREGON DEPARTMENT OF GEOLOGY AND MINERAL INDUSTRIES

More detailed coverage information is provided in these index map PDFs:

**Rogue Basin:** [http://www.oregongeology.org/pubs/ldq/Lidar\\_Series\\_Index\\_Map\\_Rogue\\_Basin\\_2013.pdf](http://www.oregongeology.org/pubs/ldq/Lidar_Series_Index_Map_Rogue_Basin_2013.pdf)

**Rogue Valley:** [http://www.oregongeology.org/pubs/ldq/Lidar\\_Series\\_Index\\_Map\\_Rogue\\_Valley\\_2013.pdf](http://www.oregongeology.org/pubs/ldq/Lidar_Series_Index_Map_Rogue_Valley_2013.pdf)

**South Coast:** [http://www.oregongeology.org/pubs/ldq/Lidar\\_Series\\_Index\\_Map\\_SouthCoast\\_2013.pdf](http://www.oregongeology.org/pubs/ldq/Lidar_Series_Index_Map_SouthCoast_2013.pdf)

Under the auspices of the Oregon Lidar Consortium, these lidar data and data products were collected in whole or part through funding provided by the following — **Rogue Basin:** Federal Emergency Management Agency, U.S. Geological Survey, and the Bureau of Land Management; **Rogue Valley:** Rogue Valley Council of Governments (RVCOG); **South Coast:** U.S. Forest Service, U.S. Fish and Wildlife Service, the Oregon Departments of Transportation, Forestry, and Parks and Recreation, and the City of Medford. Additional lidar data were provided courtesy of the U.S. Bureau of Reclamation, the Klamath Tribes, and the Klamath Basin Rangeland Trust.

Lidar Data Quadrangle (LDQ) series publications are available on DVD and require specialty GIS software to view and use. LDQ series publications can be purchased directly via the web tool, <http://www.oregongeology.org/sub/lidardataviewer/index.htm>, or from the Nature of the Northwest Information Center (NNW), 800 NE Oregon Street, Suite 177, Portland, Oregon, 97232. You may also call NNW at (503) 872-2750 or order online at <http://www.naturenw.org>. There is a \$4.95 shipping and handling charge for all mailed items. For additional information, please contact the Nature of the Northwest Information Center.

### Contact Information:

Oregon Department of Geology  
Ian Madin, Chief Scientist  
(971) 673-1542  
[ian.madin@state.or.us](mailto:ian.madin@state.or.us)

The Oregon Department of Geology and Mineral Industries is an independent agency of the State and has a broad responsibility in developing an understanding of the state's geologic resources and natural hazards. The Department then makes this information available to communities and individuals to help inform and reduce the risks from natural hazards, such as earthquakes, tsunamis, landslides, floods and volcanic eruptions. The Department assists in the formulation of state policy where an understanding of geologic materials, geologic resources, processes, and hazards is key to decision-making. The Department is also the lead state regulatory agency for mining, oil, gas and geothermal exploration, production and reclamation.

Learn more about Oregon's geology online: <http://www.OregonGeology.org>

###

*DOGAMI's mission is to provide earth science information and regulation to make Oregon safe and prosperous.*

### Media contact:

#### Carol DuVernois

[carol.duvernois@state.or.us](mailto:carol.duvernois@state.or.us)  
800 NE Oregon St., #28,  
Ste. 965  
Portland, OR 97232  
Phone: (971) 673-1555  
Fax: (971) 673-1562  
[www.OregonGeology.org](http://www.OregonGeology.org)

### Mineral Land Regulation and Reclamation Program

229 Broadalbin St. SW  
Albany, OR 97321  
Phone: (541) 967-2039  
Fax: (541) 967-2075  
[info@mlrr.oregongeology.com](mailto:info@mlrr.oregongeology.com)  
Gary W. Lynch,  
Assistant Director

### Coastal Field Office

313 SW 2nd, Ste. D  
Newport, OR 97365  
Phone: (541) 574-6642  
Fax: (541) 265-5241  
Jonathan C. Allan,  
Coastal Team Leader

### Eastern Oregon Field Office

Baker County Courthouse  
1995 3rd St., Ste. 130  
Baker City, OR 978149  
Phone: (541) 523-3133  
Fax: (541) 523-5992  
Jason D. McClaughry,  
Regional Geologist

### Nature of the Northwest Information Center

800 NE Oregon St., Ste. 965  
Portland, Oregon 97232  
(971) 673-2331  
Email: [info@naturenw.org](mailto:info@naturenw.org)  
Web: [www.NatureNW.org](http://www.NatureNW.org)  
Donald J. Haines, Manager