

Regional Resilience Planning Map

Tillamook Regional Medical Center Tillamook, Oregon

This resilience plan map shows the Tillamook Regional Medical Center and highlights critical facilities in its immediate surroundings. It can be used for Cascadia earthquake and tsunami planning *before* the earthquake occurs and for other disaster planning purposes. Due to the hospital's proximity to the Cascadia fault, the hospital is in a high seismic hazard region and is expected to experience prolonged strong shaking. The hospital is located in the Large, Extra Large, and Extra Extra Large (XXL) tsunami inundation zones. The worst-case scenario is the XXL zone, which defines the tsunami evacuation zone. See the Tillamook Regional Medical Center site resilience plan map for a close-up view. Tillamook Regional Medical Center should *not* evacuate from a "distant tsunami," which is generated from an earthquake far away from the Oregon coast, such as Alaska or Japan.

Explanation of Symbols

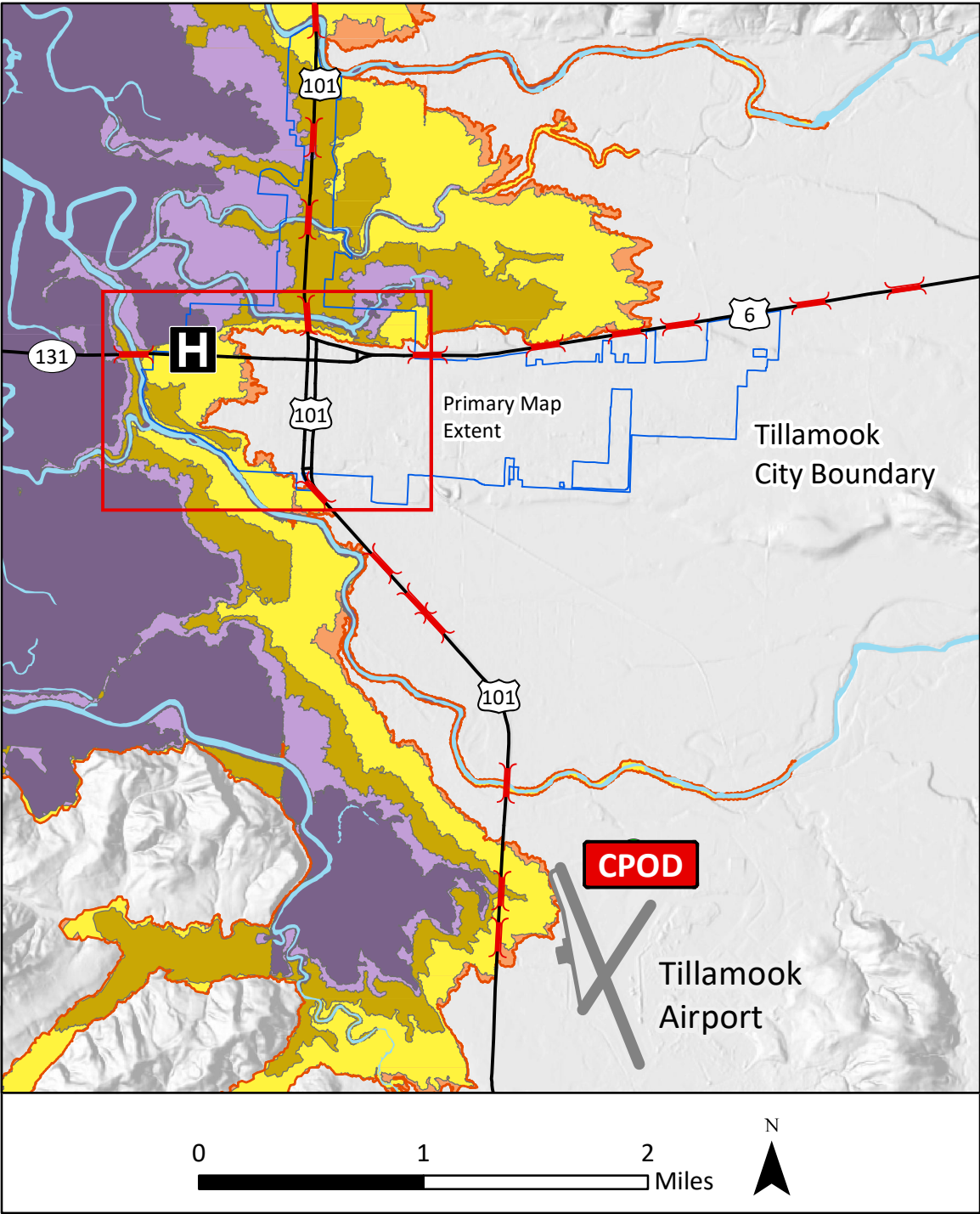
Tsunamis generated by a Cascadia Subduction Zone earthquake can vary in size from SM, M, L, XL to XXL.

- Small Tsunami Hazard Zone (SM)
(Small tsunamis inundate the area defined by this zone.)
- Medium Tsunami Hazard Zone (M)
(This zone captures ~79% of local tsunamis.)
- Large Tsunami Hazard Zone (L)
(This zone captures ~95% of local tsunamis.)
- Extra Large Tsunami Hazard Zone (XL)
(This zone captures ~98% of local tsunamis.)
- Extra Extra Large Tsunami Hazard Zone (XXL)
(This zone captures 100% of local tsunamis.)

The tsunami evacuation zone is defined by the XXL zone
DOGAMI tsunami evacuation brochures are available at: www.OregonTsunami.org
Source: DOGAMI Special Paper 43 (2011)

- | | |
|--|--------------------------|
| Parking Lot
(Potential Tsunami Evacuation Site) | Open Space |
| Community Point of Distribution | Tsunami Evacuation Route |
| Potential Community Point of Distribution | Hospital |
| Buildings of Interest | Fuel - cardlock |
| Buildings | Bridge |
| | Fuel - above ground |
| | Fuel - underground |

Tillamook Area Map



Ways to Increase Tsunami Safety:

- Obtain site-specific tsunami inundation model
- Relocate hospital outside tsunami hazard zone
- Build new using the national model code on tsunami vertical evacuation structures
 - Addition
 - New building
 - Platform or berm
 - Protective wall system
- Improve emergency power system, including fuel supply, outside tsunami hazard zone
- Plan to access emergency water outside tsunami hazard zone
 - Ground water wells
 - Tanks
- Improve existing tsunami evacuation route
- Other measures

More information at www.oregongeology.org

