

Site Resilience Planning Map

Tillamook Regional Medical Center Tillamook, Oregon

This resilience plan map shows the Tillamook Regional Medical Center and its tsunami hazards. For life safety purposes, all people located in the tsunami evacuation zone are urged to move quickly to high ground **above** the tsunami evacuation zone. Based on the worst-case scenario, the tsunami is expected to arrive at the hospital approximately 44 minutes after the onset of earthquake shaking. The tsunami flow depth is approximately 3 to 10 ft on the seaward side of the hospital, and 1 to 3 ft on the landward side of the hospital. The elevation of the hospital is approximately 19 ft. See the Tillamook regional resilience plan map for a view of the surrounding critical facilities. Tillamook Regional Medical Center should **not** evacuate from a “distant tsunami,” which is generated from an earthquake far away from the Oregon coast, such as Alaska or Japan.

Explanation of Symbols

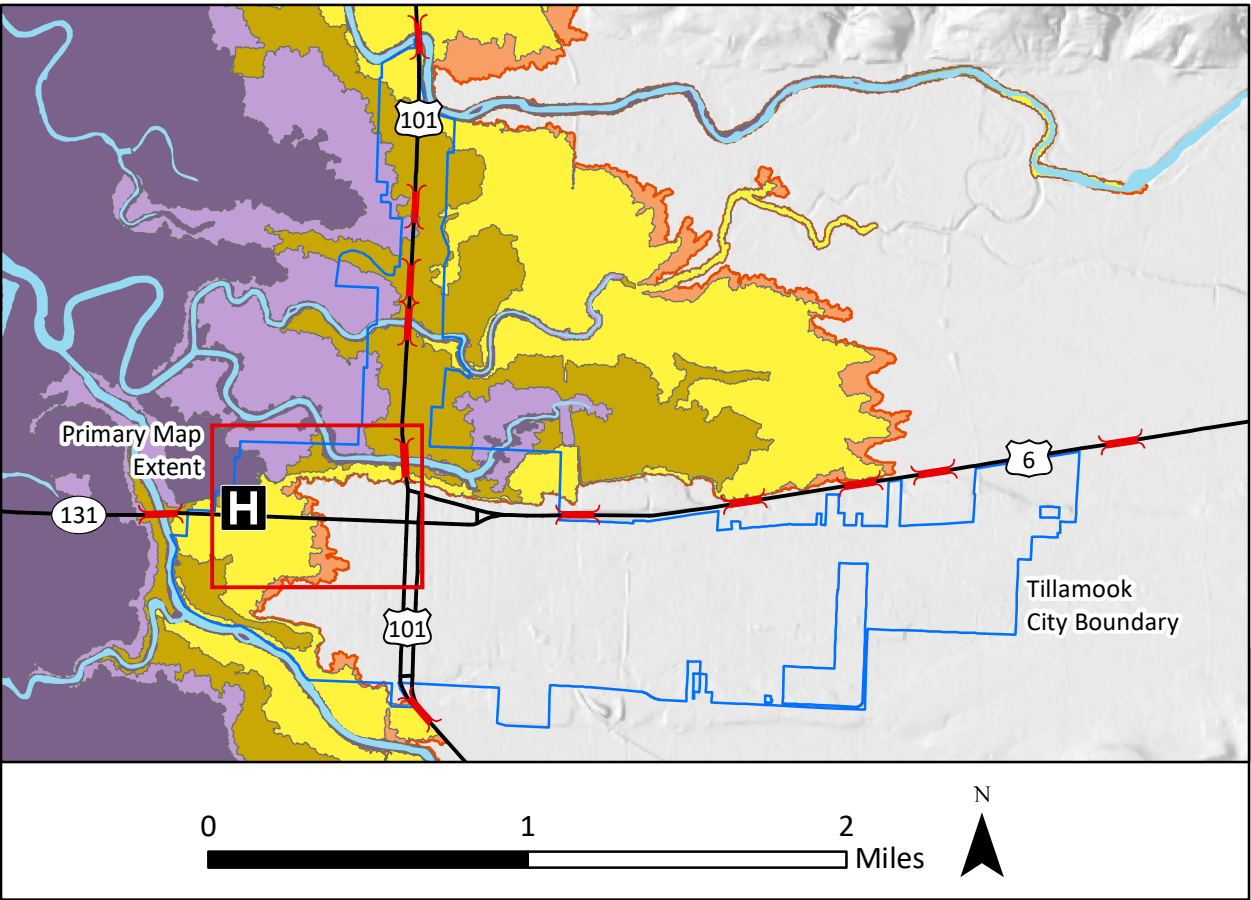
Tsunamis generated by a Cascadia Subduction Zone earthquake can vary in size from SM, M, L, XL to XXL.

- Small Tsunami Hazard Zone (SM)
(Small tsunamis inundate the area defined by this zone.)
- Medium Tsunami Hazard Zone (M)
(This zone captures ~79% of local tsunamis.)
- Large Tsunami Hazard Zone (L)
(This zone captures ~95% of local tsunamis.)
- Extra Large Tsunami Hazard Zone (XL)
(This zone captures ~98% of local tsunamis.)
- Extra Extra Large Tsunami Hazard Zone (XXL)
(This zone captures 100% of local tsunamis.)

The tsunami evacuation zone is defined by the XXL zone
DOGAMI tsunami evacuation brochures are available at: www.OregonTsunami.org
Source: DOGAMI Special Paper 43 (2011)

- Parking Lot
(Potential Tsunami Evacuation Site)
- Buildings of Interest
- Buildings
- Tsunami Evacuation Route
- Hospital
- Fuel - above ground
- Bridge

Tillamook Area Map



Prepared by: Yumei Wang and Jon J. Franczyk
Reviewed by: Eric Swanson and Wayne Alvarez-Rojas
February 8, 2018



STATE OF OREGON
DEPARTMENT OF GEOLOGY AND MINERAL INDUSTRIES
www.oregongeology.org

