

Regional Resilience Planning Map

Lower Umpqua Hospital, Reedsport, Oregon

This regional resilience planning map shows the location of the hospital and highlights nearby critical facilities. The map can be used to help develop hospital resilience action plans for a Cascadia earthquake and tsunami, and for other disaster planning purposes **before** the earthquake occurs. Due to the hospital's proximity to the Cascadia fault, the hospital is in a high seismic hazard region and is expected to experience prolonged strong shaking. The hospital is located outside the tsunami hazard zone, so tsunami evacuation is **not** required.

Explanation of Symbols

Tsunamis generated by a Cascadia Subduction Zone earthquake can vary in size from SM, M, L, XL to XXL.

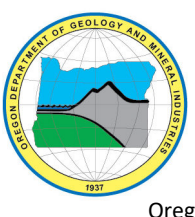
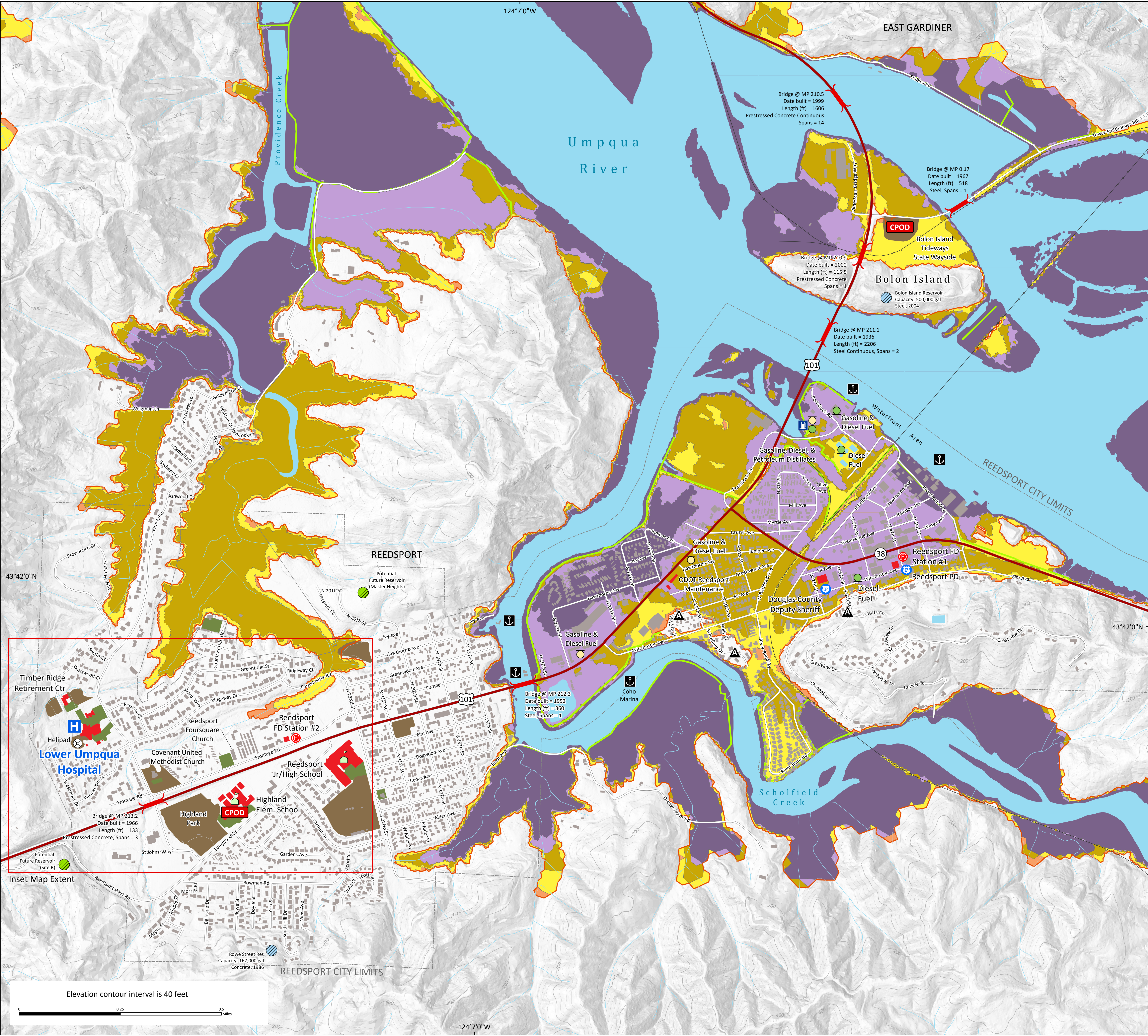
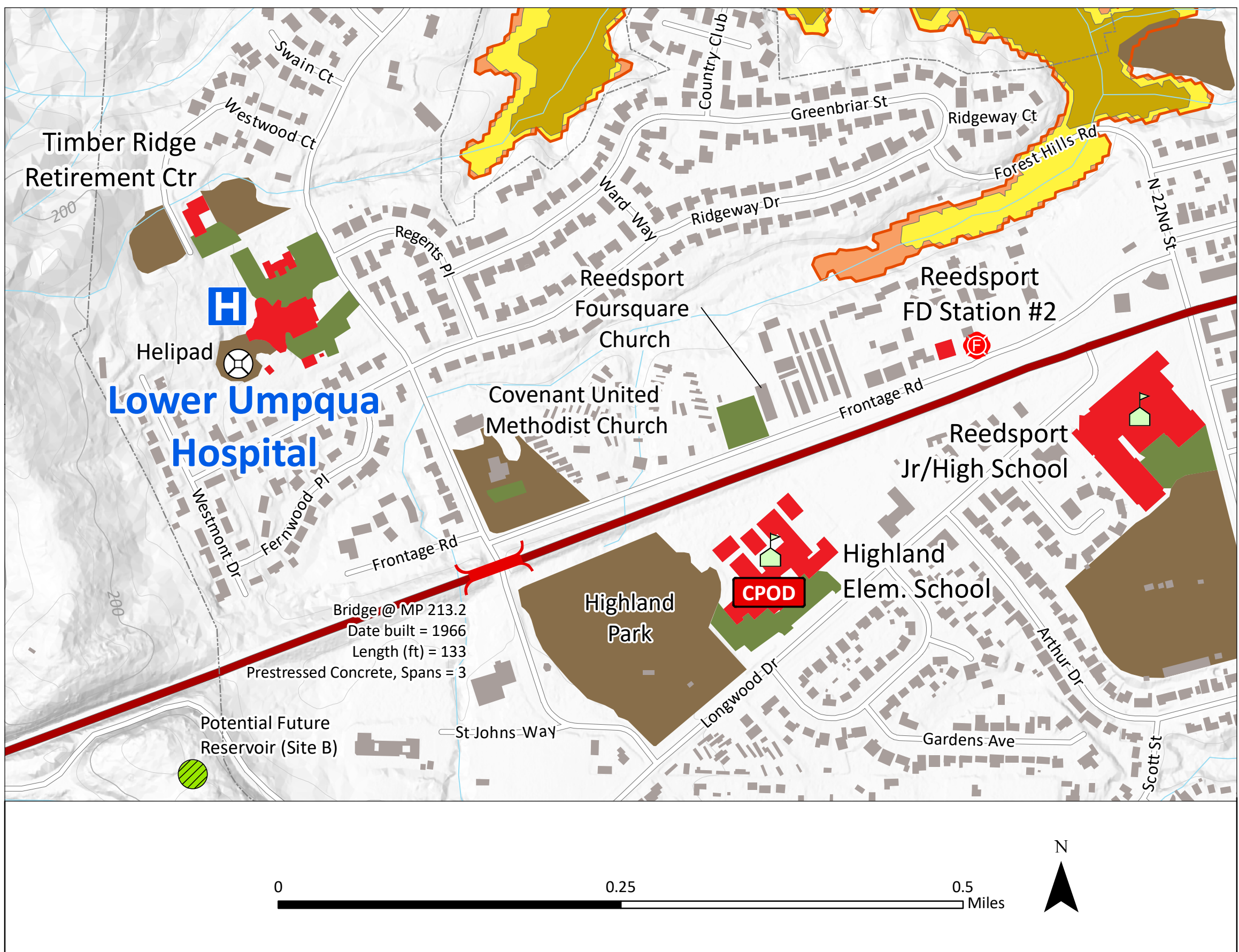
- Small Tsunami Hazard Zone (SM)
(This zone captures ~26% of local tsunamis, meaning there is a 74% chance the next tsunami will be larger than this scenario.)
- Medium Tsunami Hazard Zone (M)
(This zone captures ~79% of local tsunamis.)
- Large Tsunami Hazard Zone (L)
(This zone captures ~95% of local tsunamis.)
- Extra Large Tsunami Hazard Zone (XL)
(This zone captures ~98% of local tsunamis.)
- Extra Extra Large Tsunami Hazard Zone (XXL)
(This zone captures 100% of local tsunamis, meaning this is the largest tsunami the model anticipates. The tsunami evacuation zone is defined by the XXL zone.)

Source: DOGAMI Open-File Report O-13-19 (<https://www.oregongeology.org/pubs/ofr/p-o-13-19.htm>)

- More tsunami information at www.OregonTsunami.org, including:
- Tsunami evacuation maps (including assembly areas)
 - Online interactive map viewer
 - Local tsunami hazard zones: DOGAMI Open-File Report O-13-19 (2013)
 - Original scientific publication: DOGAMI Special Paper 43 (2011)

- | | | | | | |
|--|---------------------------------|--|-----------------|--|---------------------|
| | Hospital | | Parking Lot | | Fuel - above ground |
| | Community Point of Distribution | | Open Space | | Fuel - underground |
| | Assembly Area | | Fuel - Cardlock | | Existing Reservoir |
| | Building of Interest | | Boat Dock | | Potential Reservoir |
| | Building | | Levee | | Bridge |

Inset Map



STATE OF OREGON
DEPARTMENT OF GEOLOGY AND MINERAL INDUSTRIES
www.oregongeology.org
Open-File Report O-20-02
Oregon Coastal Hospital Resilience Project: Resilience Planning Maps and Guidance

Prepared by:
Yumei Wang and
Jon J. Franczyk
January, 2019