



Channel Migration Hazard Map of the Lower Columbia-Sandy Watershed, Oregon

PLATE 8

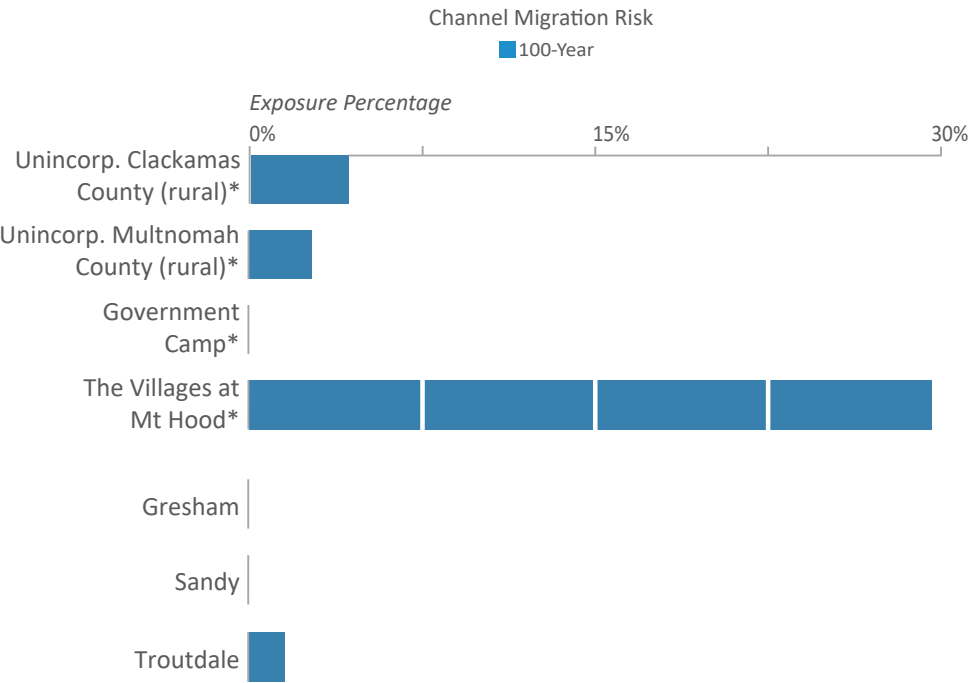


The channel migration hazard data show areas expected to be exposed in a 100-year period. In the upper portions of drainages in the study area (just below Mount Hood), channel migration hazards are severe.

Channel Migration Exposure

Channel Migration Zone

Percentage of Building Value Exposed to Channel Migration



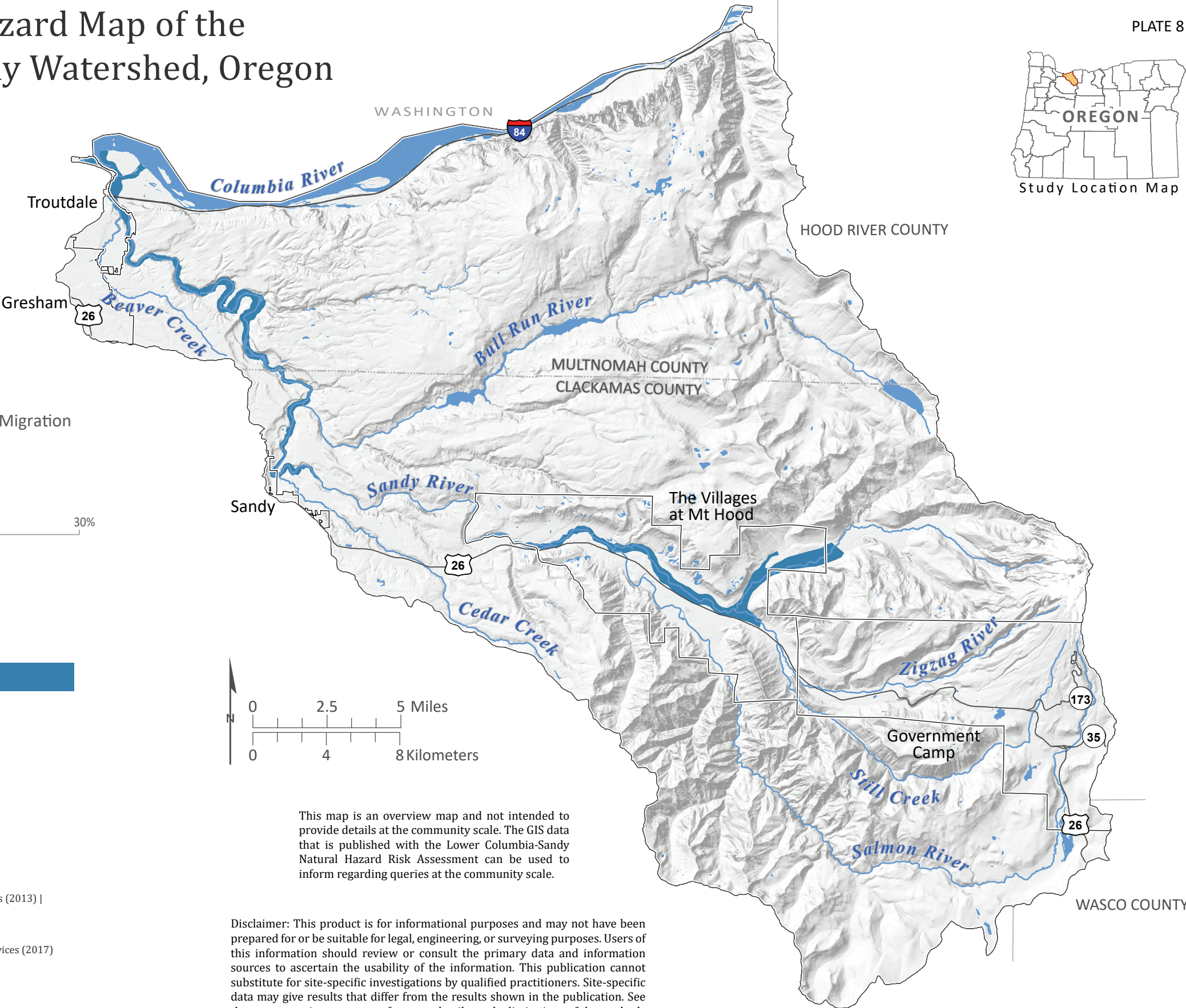
*Unincorporated

Data Sources:

Channel Migration hazard zone (100-year): Oregon Department of Geology, English and others (2013) | Natural Systems Design, Abbe and others (2015)
Roads: Oregon Department of Transportation Signed Routes (2013)
Place names: U.S. Geological Survey Geographic Names Information System (2015)
City limits: Oregon Department of Transportation (2014) | Clackamas County Technology Services (2017)
Basemap: U.S. Geological Survey and Oregon Lidar Consortium (2012)
Hydrography: U.S. Geological Survey National Hydrography Dataset (2017)

Projection: NAD 1983 UTM Zone 10N
Software: Esri® ArcMap 10, Adobe® Illustrator CS6

Cartography by: Lowell H. Anthony, 2018



This map is an overview map and not intended to provide details at the community scale. The GIS data that is published with the Lower Columbia-Sandy Natural Hazard Risk Assessment can be used to inform regarding queries at the community scale.

Disclaimer: This product is for informational purposes and may not have been prepared for or be suitable for legal, engineering, or surveying purposes. Users of this information should review or consult the primary data and information sources to ascertain the usability of the information. This publication cannot substitute for site-specific investigations by qualified practitioners. Site-specific data may give results that differ from the results shown in the publication. See the accompanying text report for more details on the limitations of the methods and data used to prepare this publication.