



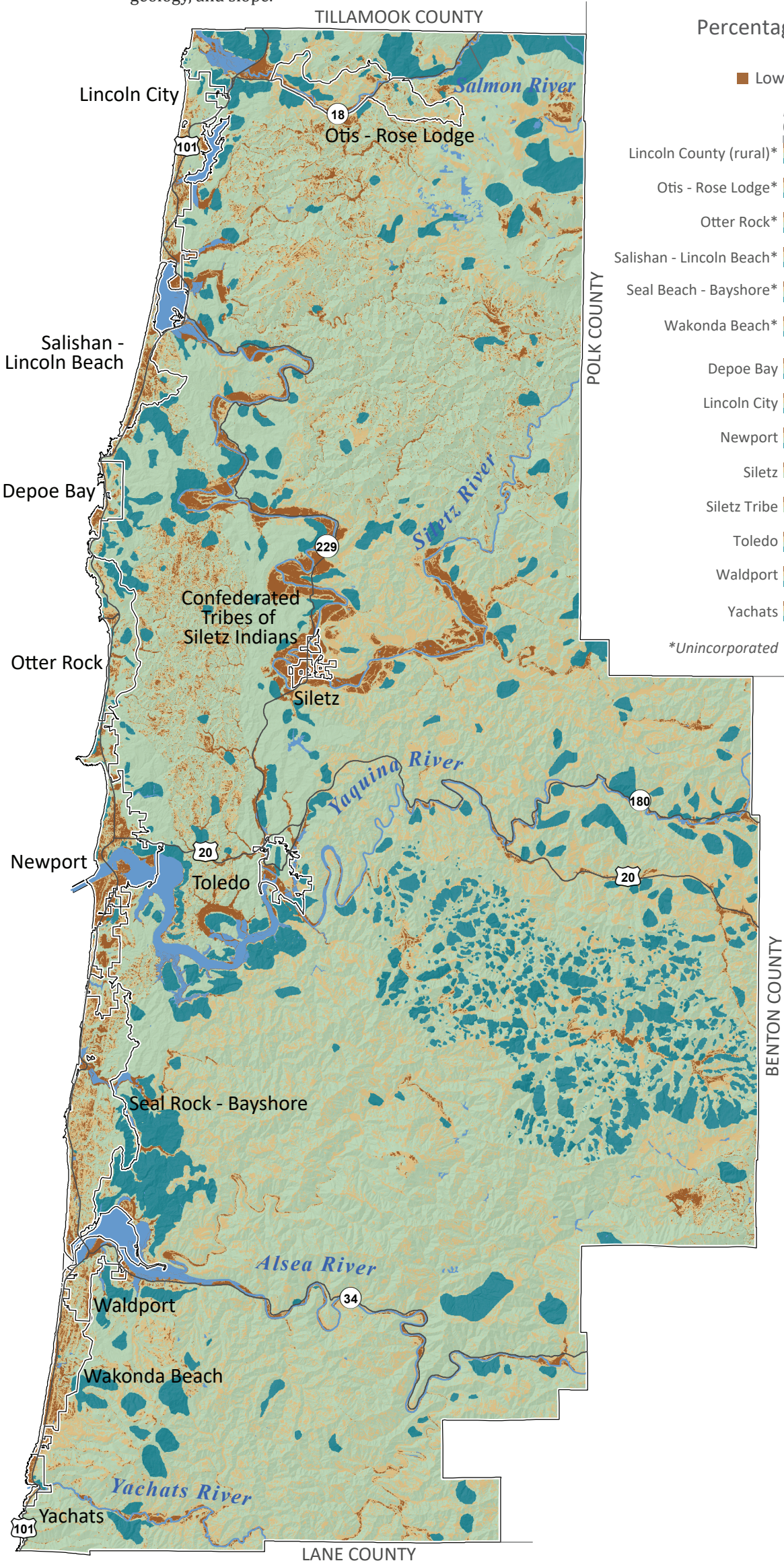
# Landslide Susceptibility Map of Lincoln County, Oregon

PLATE 5

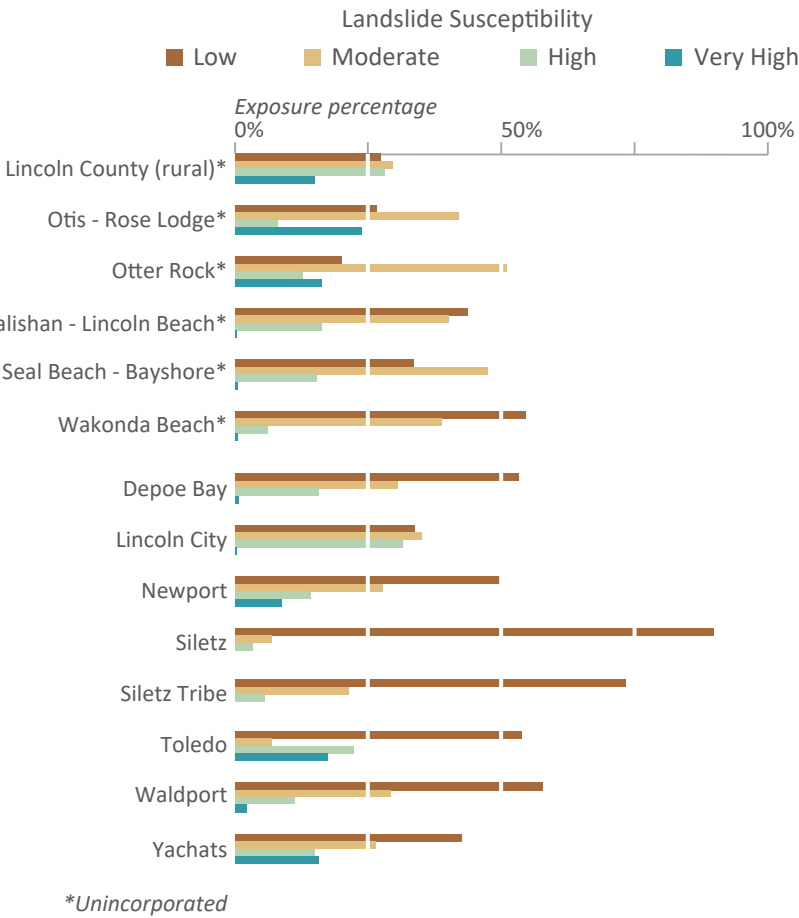
Landslide susceptibility is categorized as Low, Moderate, High, and Very High which describes the general level of susceptibility to landslide hazard. The dataset is an aggregation of three primary sources: landslide inventory (SLIDO), generalized geology, and slope.



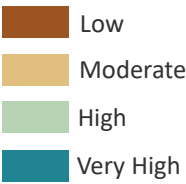
Study Location Map



Percentage of Building Value Exposed to Landslide



Landslide Susceptibility



This map is an overview map and not intended to provide details at the community scale. The GIS data that is published with the Lincoln County Natural Hazard Risk Assessment can be used to inform regarding queries at the community scale.

**Data Sources:**  
Landslide susceptibility: Oregon Department of Geology, Burns and others (2016)  
Roads: Oregon Department of Transportation (2014)  
Place names: U.S. Geological Survey Geographic Names Information System (2015)  
City limits: Oregon Department of Transportation (2014)  
Basemap: U.S. Geological Survey and Oregon Lidar Consortium (2012)  
Projection: NAD 1983 UTM Zone 10N  
Software: Esri® ArcMap 10, Adobe® Illustrator CS6  
Cartography by: Lowell H. Anthony, 2018

**Disclaimer:** This product is for informational purposes and may not have been prepared for or be suitable for legal, engineering, or surveying purposes. Users of this information should review or consult the primary data and information sources to ascertain the usability of the information. This publication cannot substitute for site-specific investigations by qualified practitioners. Site-specific data may give results that differ from the results shown in the publication. See the accompanying text report for more details on the limitations of the methods and data used to prepare this publication.

