



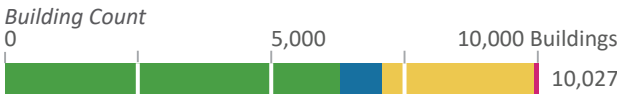
Building Distribution Map of Curry County, Oregon

PLATE 1



Buildings by Occupancy Class
(Ranked by Value)

■ Residential ■ Commercial/Industrial ■ Agricultural/Utility ■ Public/Non-Profit



*Unincorporated

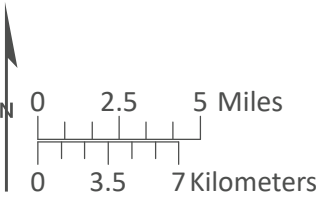
Building Occupancy

- Agricultural / Utility
- Commercial & Industrial
- Public & Non Profit
- Residential

Disclaimer: This product is for informational purposes and may not have been prepared for or be suitable for legal, engineering, or surveying purposes. Users of this information should review or consult the primary data and information sources to ascertain the usability of the information. This publication cannot substitute for site-specific investigations by qualified practitioners. Site-specific data may give results that differ from the results shown in the publication. See the accompanying text report for more details on the limitations of the methods and data used to prepare this publication.

Data Sources:
Building footprints: Oregon Department of Geology (2010)
Roads: Oregon Department of Transportation (2014)
Place names: U.S. Geological Survey Geographic Names Information System (2015)
City limits: Oregon Department of Transportation (2014)
Basemap: U.S. Geological Survey and Oregon Lidar Consortium (2012)
Hydrography: U.S. Geological Survey National Hydrography Dataset (2017)
Projection: NAD 1983 UTM Zone 10N
Software: Esri® ArcMap 10, Adobe® Illustrator CS6
Cartography by: Lowell H. Anthony, 2018

This map is an overview map and not intended to provide details at the community scale. The GIS data that is published with the Curry County Natural Hazard Risk Assessment can be used to inform regarding queries at the community scale.





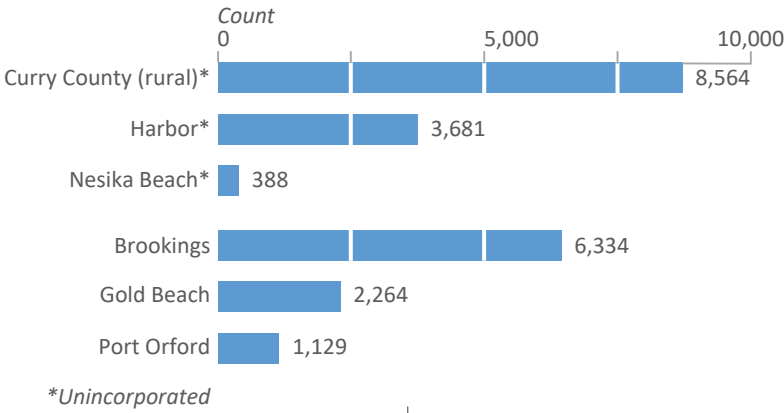
Population Density Map of Curry County, Oregon

PLATE 2

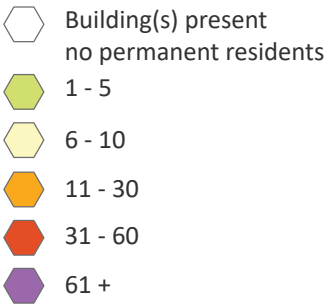


Population

■ Number of People



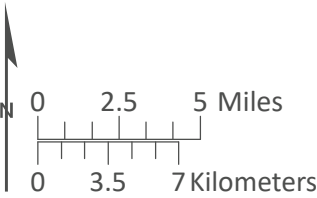
People per 20 acres



Disclaimer: This product is for informational purposes and may not have been prepared for or be suitable for legal, engineering, or surveying purposes. Users of this information should review or consult the primary data and information sources to ascertain the usability of the information. This publication cannot substitute for site-specific investigations by qualified practitioners. Site-specific data may give results that differ from the results shown in the publication. See the accompanying text report for more details on the limitations of the methods and data used to prepare this publication.

Data Sources:
Population data: U.S. Census (2010)
Roads: Oregon Department of Transportation (2014)
Place names: U.S. Geological Survey Geographic Names Information System (2015)
City limits: Oregon Department of Transportation (2014)
Basemap: U.S. Geological Survey and Oregon Lidar Consortium (2012)
Hydrography: U.S. Geological Survey National Hydrography Dataset (2017)
Projection: NAD 1983 UTM Zone 10N
Software: Esri® ArcMap 10, Adobe® Illustrator CS6
Cartography by: Lowell H. Anthony, 2018

This map is an overview map and not intended to provide details at the community scale. The GIS data that is published with the Curry County Natural Hazard Risk Assessment can be used to inform regarding queries at the community scale.





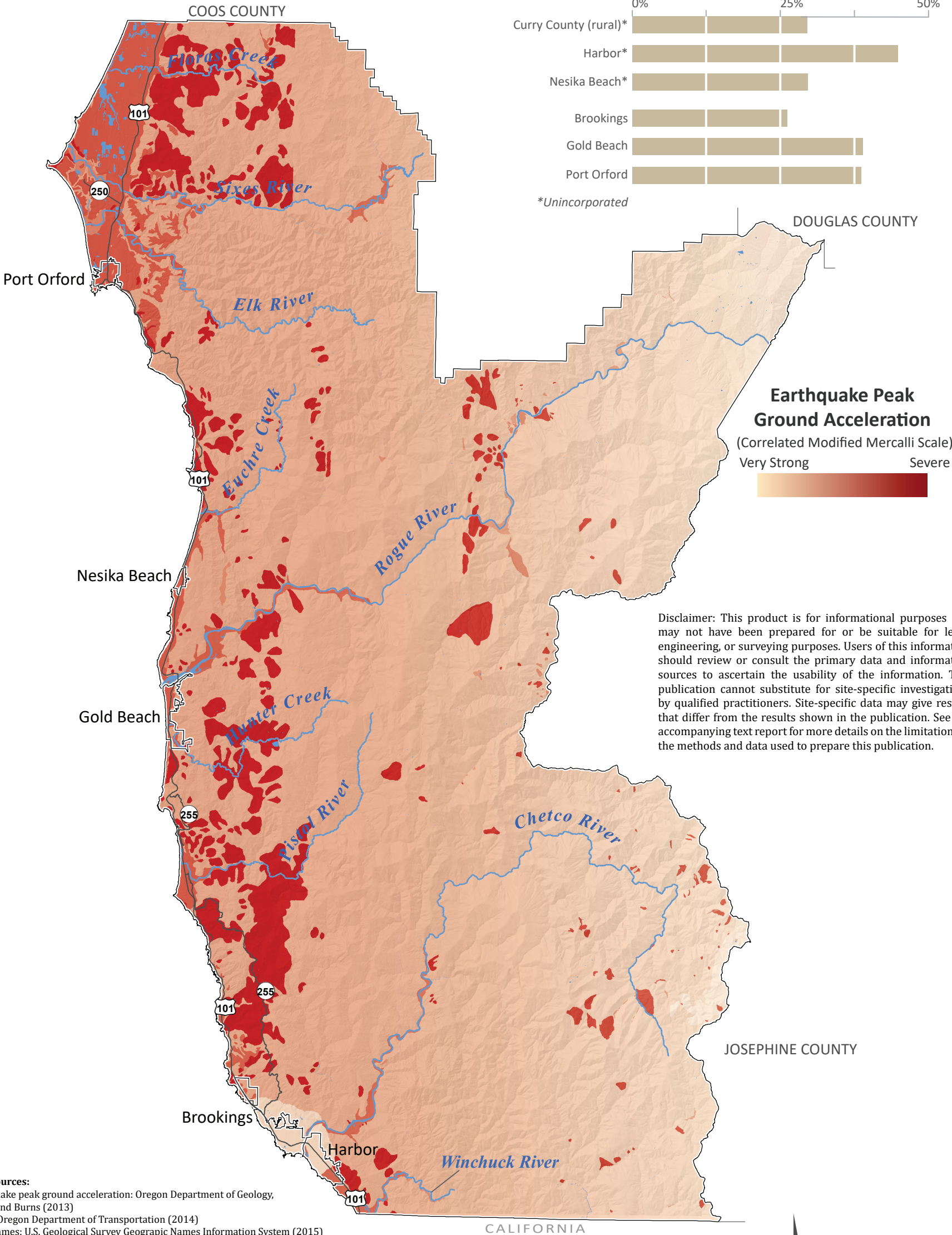
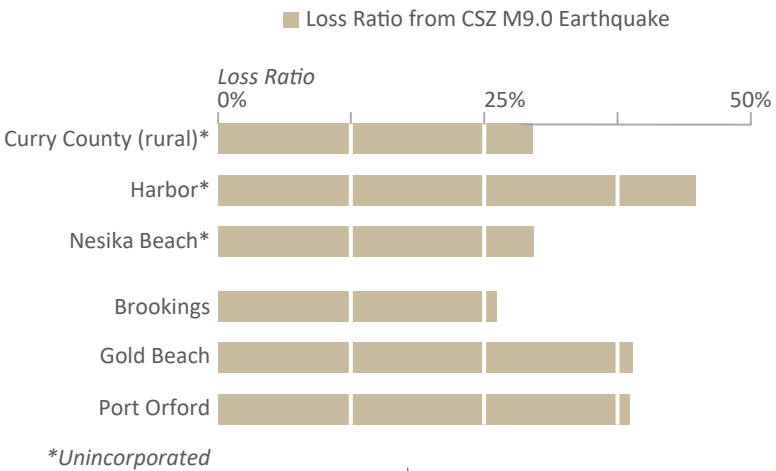
M9.0 CSZ Earthquake Shaking Map of Curry County, Oregon

PLATE 3



Peak Ground Acceleration (PGA) is the maximum acceleration in a given location or rather how hard the ground is shaking during an earthquake. It is one measurement of ground motion, which is closely associated with the level of damage that occurs from an earthquake.

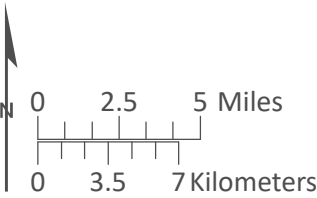
Total Building Value Loss Ratio from M 9.0 Earthquake



Disclaimer: This product is for informational purposes and may not have been prepared for or be suitable for legal, engineering, or surveying purposes. Users of this information should review or consult the primary data and information sources to ascertain the usability of the information. This publication cannot substitute for site-specific investigations by qualified practitioners. Site-specific data may give results that differ from the results shown in the publication. See the accompanying text report for more details on the limitations of the methods and data used to prepare this publication.

Data Sources:
Earthquake peak ground acceleration: Oregon Department of Geology, Madin and Burns (2013)
Roads: Oregon Department of Transportation (2014)
Place names: U.S. Geological Survey Geographic Names Information System (2015)
City limits: Oregon Department of Transportation (2014)
Basemap: U.S. Geological Survey and Oregon Lidar Consortium (2012)
Hydrography: U.S. Geological Survey National Hydrography Dataset (2017)
Projection: NAD 1983 UTM Zone 10N
Software: Esri® ArcMap 10, Adobe® Illustrator CS6
Cartography by: Lowell H. Anthony, 2018

This map is an overview map and not intended to provide details at the community scale. The GIS data that is published with the Curry County Natural Hazard Risk Assessment can be used to inform regarding queries at the community scale.





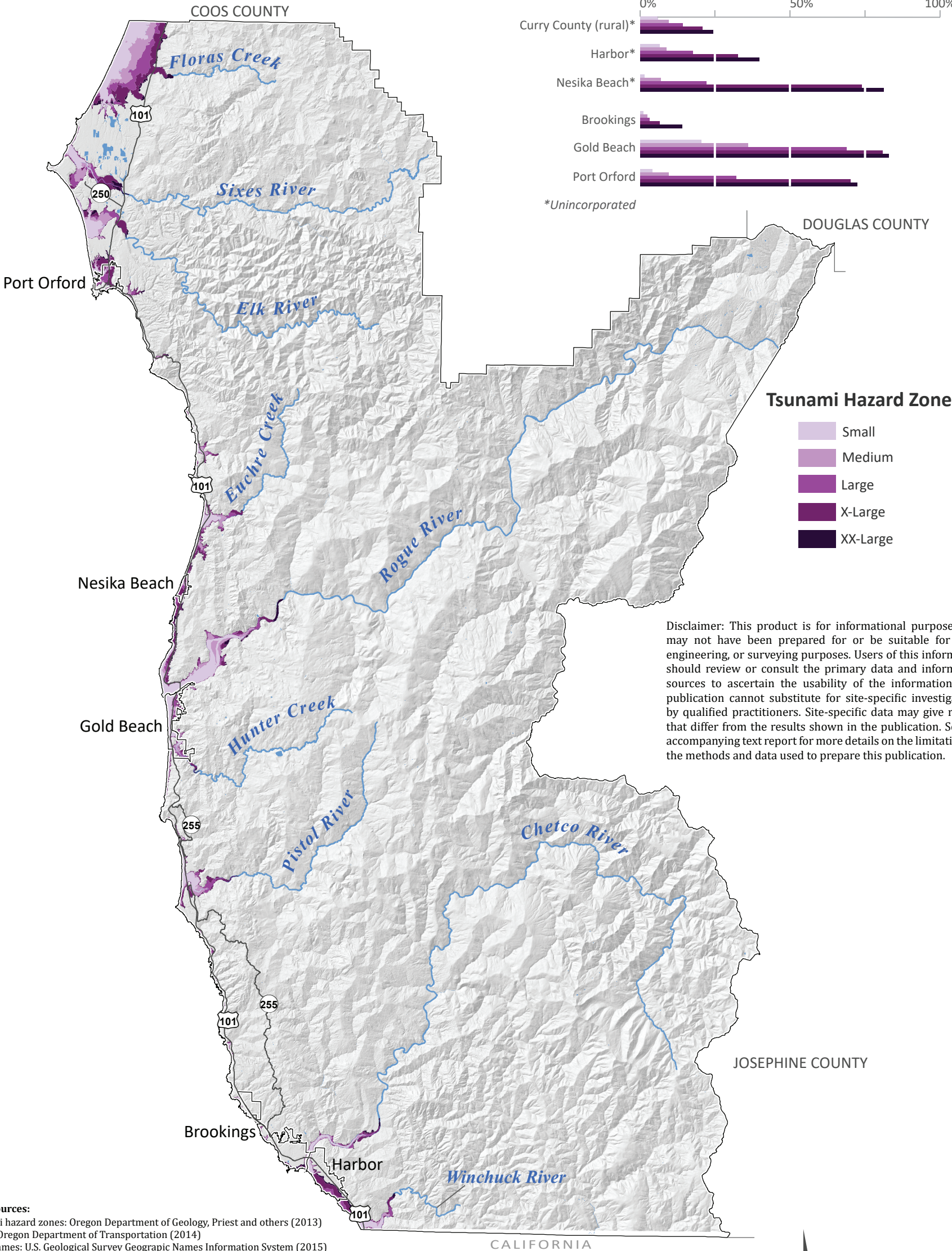
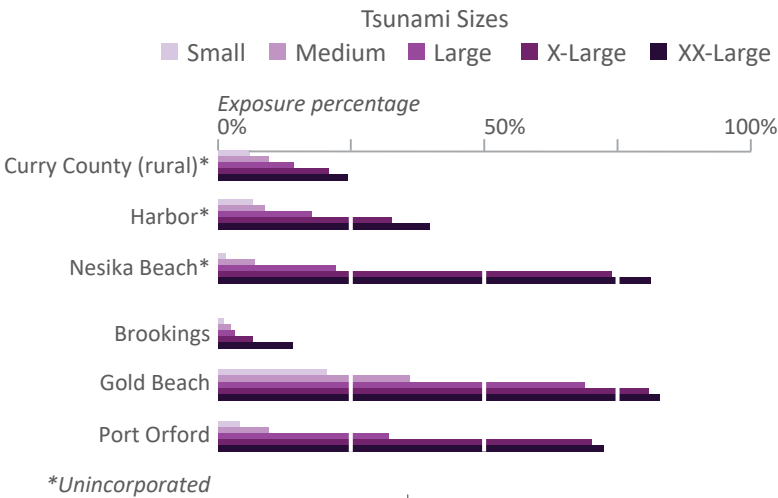
Tsunami Inundation Map of Curry County, Oregon

PLATE 4



The tsunami hazard data show areas of expected inundation from several local tsunami scenarios produced from a magnitude 9.0 CSZ earthquake. The scenarios were categorized based on “t-shirt” sizes, ranging from Small to XX-Large.

Percentage of Building Value Exposed to Tsunami



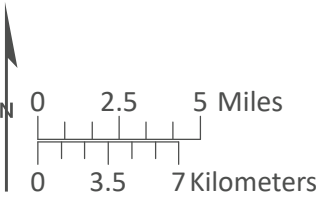
Tsunami Hazard Zone

- Small
- Medium
- Large
- X-Large
- XX-Large

Disclaimer: This product is for informational purposes and may not have been prepared for or be suitable for legal, engineering, or surveying purposes. Users of this information should review or consult the primary data and information sources to ascertain the usability of the information. This publication cannot substitute for site-specific investigations by qualified practitioners. Site-specific data may give results that differ from the results shown in the publication. See the accompanying text report for more details on the limitations of the methods and data used to prepare this publication.

Data Sources:
Tsunami hazard zones: Oregon Department of Geology, Priest and others (2013)
Roads: Oregon Department of Transportation (2014)
Place names: U.S. Geological Survey Geographic Names Information System (2015)
City limits: Oregon Department of Transportation (2014)
Basemap: U.S. Geological Survey and Oregon Lidar Consortium (2012)
Hydrography: U.S. Geological Survey National Hydrography Dataset (2017)
Projection: NAD 1983 UTM Zone 10N
Software: Esri® ArcMap 10, Adobe® Illustrator CS6
Cartography by: Lowell H. Anthony, 2018

This map is an overview map and not intended to provide details at the community scale. The GIS data that is published with the Lincoln County Natural Hazard Risk Assessment can be used to inform regarding queries at the community scale.





Flood Hazard Map of Curry County, Oregon

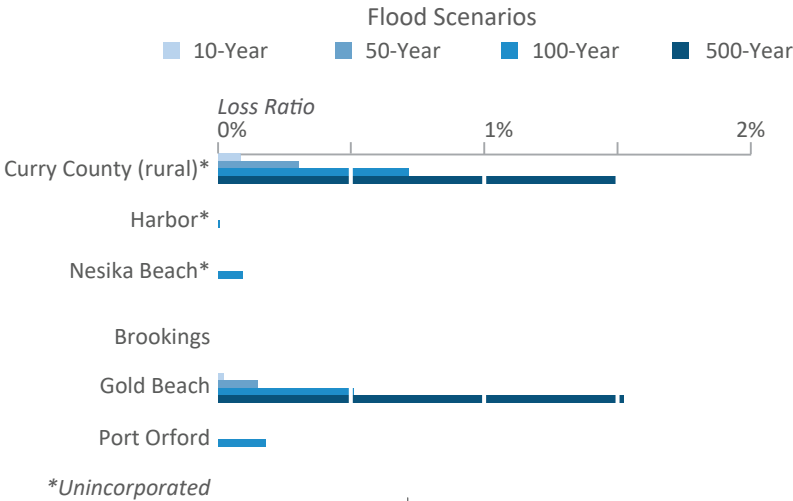
PLATE 5



Study Location Map

The flood hazard data show areas expected to be inundated during a 100-year flood event. Flooding sources include riverine. Areas are consistent with the regulatory flood zones depicted in Curry County’s Digital Flood Insurance Rate Maps.

Ratio of Estimated Loss to Flooding



Flood Hazard Zone

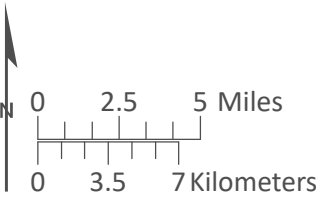
100-Year Flood
(1% annual chance)

Disclaimer: This product is for informational purposes and may not have been prepared for or be suitable for legal, engineering, or surveying purposes. Users of this information should review or consult the primary data and information sources to ascertain the usability of the information. This publication cannot substitute for site-specific investigations by qualified practitioners. Site-specific data may give results that differ from the results shown in the publication. See the accompanying text report for more details on the limitations of the methods and data used to prepare this publication.

Data Sources:

Flood hazard zone (100-year): Curry County Flood Insurance Rate Map (2018)
Roads: Oregon Department of Transportation (2014)
Place names: U.S. Geological Survey Geographic Names Information System (2015)
City limits: Oregon Department of Transportation (2014)
Basemap: U.S. Geological Survey and Oregon Lidar Consortium (2012)
Hydrography: U.S. Geological Survey National Hydrography Dataset (2017)
Projection: NAD 1983 UTM Zone 10N
Software: Esri® ArcMap 10, Adobe® Illustrator CS6
Cartography by: Lowell H. Anthony, 2018

This map is an overview map and not intended to provide details at the community scale. The GIS data that is published with the Curry County Natural Hazard Risk Assessment can be used to inform regarding queries at the community scale.





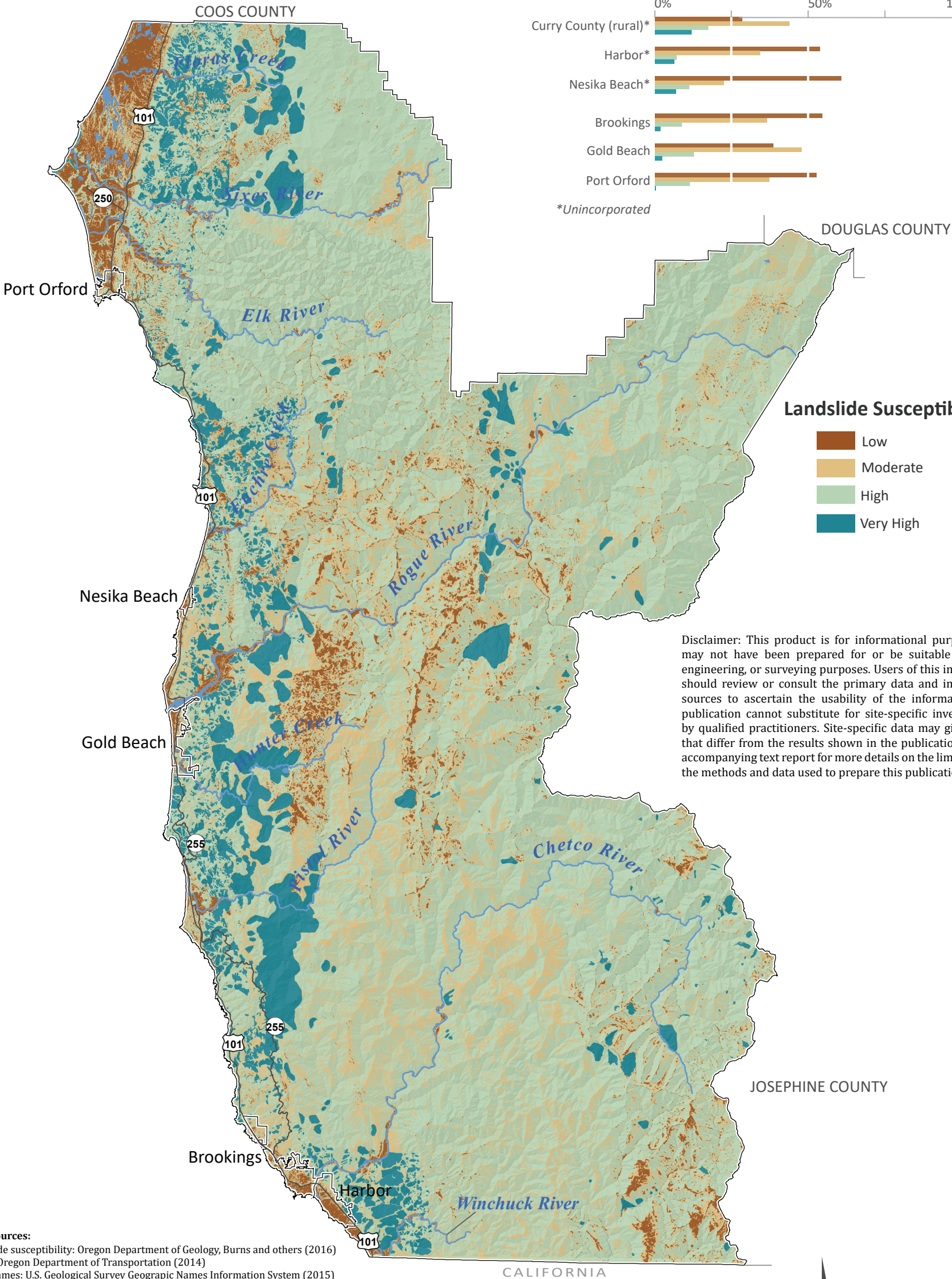
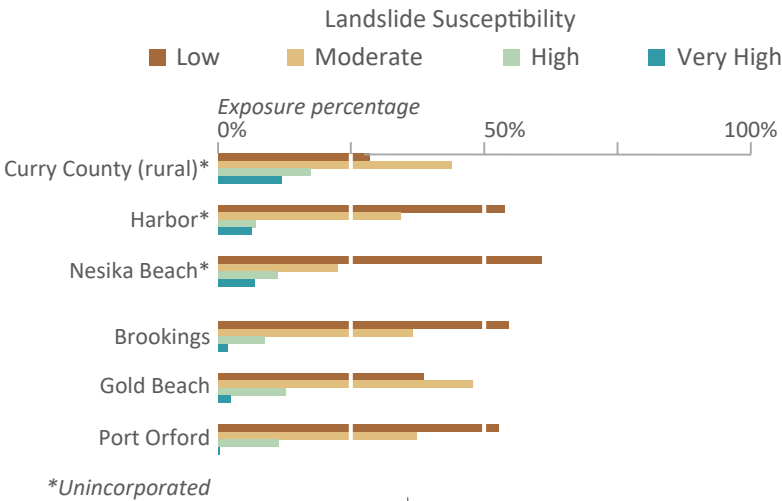
Landslide Susceptibility Map of Curry County, Oregon

PLATE 6

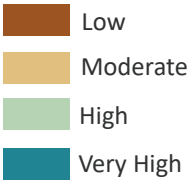


Landslide susceptibility is categorized as Low, Moderate, High, and Very High which describes the general level of susceptibility to landslide hazard. The dataset is an aggregation of three primary sources: landslide inventory (SLIDO), generalized geology, and slope.

Percentage of Building Value Exposed to Landslide



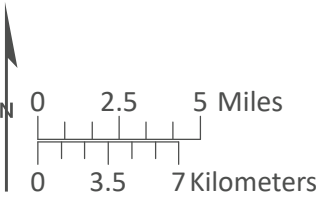
Landslide Susceptibility



Disclaimer: This product is for informational purposes and may not have been prepared for or be suitable for legal, engineering, or surveying purposes. Users of this information should review or consult the primary data and information sources to ascertain the usability of the information. This publication cannot substitute for site-specific investigations by qualified practitioners. Site-specific data may give results that differ from the results shown in the publication. See the accompanying text report for more details on the limitations of the methods and data used to prepare this publication.

Data Sources:
Landslide susceptibility: Oregon Department of Geology, Burns and others (2016)
Roads: Oregon Department of Transportation (2014)
Place names: U.S. Geological Survey Geographic Names Information System (2015)
City limits: Oregon Department of Transportation (2014)
Basemap: U.S. Geological Survey and Oregon Lidar Consortium (2012)
Hydrography: U.S. Geological Survey National Hydrography Dataset (2017)
Projection: NAD 1983 UTM Zone 10N
Software: Esri® ArcMap 10, Adobe® Illustrator CS6
Cartography by: Lowell H. Anthony, 2018

This map is an overview map and not intended to provide details at the community scale. The GIS data that is published with the Curry County Natural Hazard Risk Assessment can be used to inform regarding queries at the community scale.





Wildfire Risk Map of Curry County, Oregon

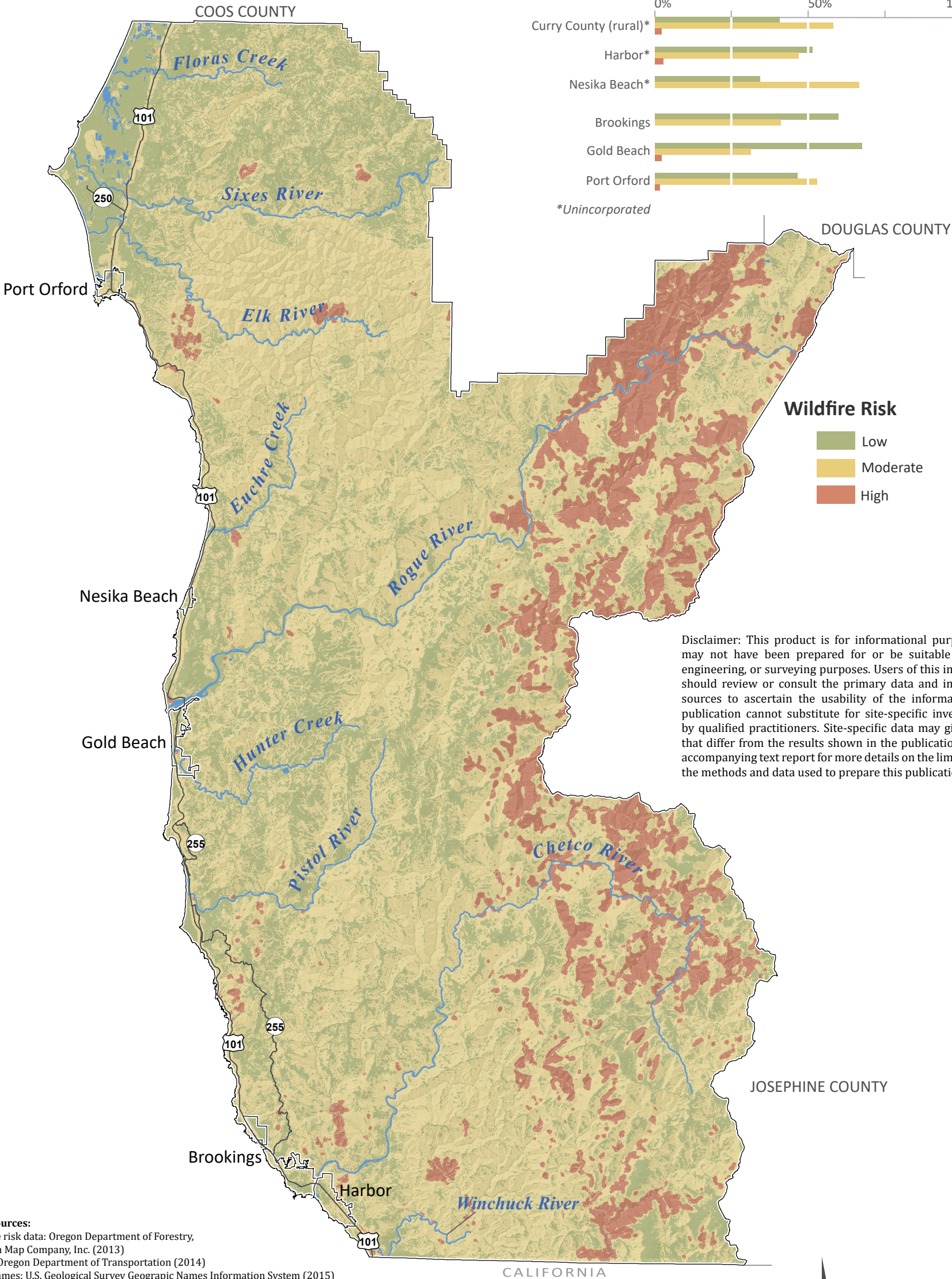
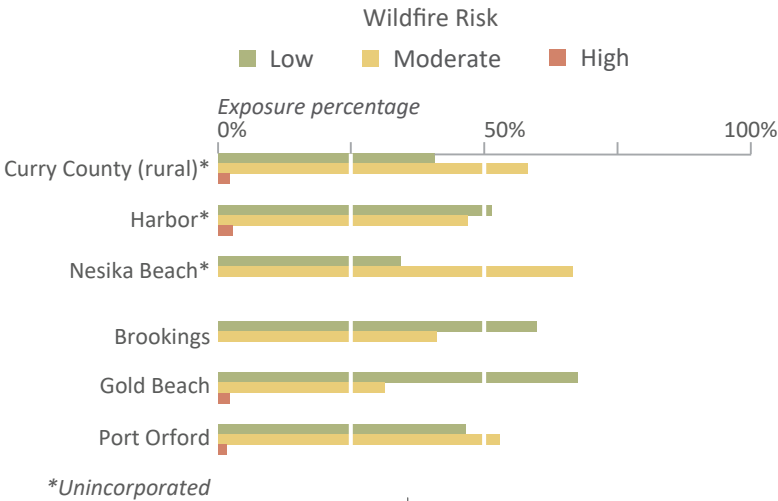
PLATE 7

Wildfire Risk is categorized as Low, Moderate, and High and indicates the level of risk a location has to wildfire hazard. The Wildfire Risk data layer (Fire Risk Index) is derived from a combination of the Fire Threat Index (fire history and behavior) and the Fire Effects Index (infrastructure and assets).



Study Location Map

Percentage of Building Value Exposed to Wildfire



Wildfire Risk

- Low
- Moderate
- High

Disclaimer: This product is for informational purposes and may not have been prepared for or be suitable for legal, engineering, or surveying purposes. Users of this information should review or consult the primary data and information sources to ascertain the usability of the information. This publication cannot substitute for site-specific investigations by qualified practitioners. Site-specific data may give results that differ from the results shown in the publication. See the accompanying text report for more details on the limitations of the methods and data used to prepare this publication.

Data Sources:
Wildfire risk data: Oregon Department of Forestry, Sanborn Map Company, Inc. (2013)
Roads: Oregon Department of Transportation (2014)
Place names: U.S. Geological Survey Geographic Names Information System (2015)
City limits: Oregon Department of Transportation (2014)
Basemap: U.S. Geological Survey and Oregon Lidar Consortium (2012)
Hydrography: U.S. Geological Survey National Hydrography Dataset (2017)
Projection: NAD 1983 UTM Zone 10N
Software: Esri® ArcMap 10, Adobe® Illustrator CS6
Cartography by: Lowell H. Anthony, 2018

This map is an overview map and not intended to provide details at the community scale. The GIS data that is published with the Curry County Natural Hazard Risk Assessment can be used to inform regarding queries at the community scale.

