

STATE OF OREGON
DEPARTMENT OF GEOLOGY AND MINERAL INDUSTRIES
DONALD A. HULL, STATE GEOLOGIST

UNITED STATES
DEPARTMENT OF THE INTERIOR
GEOLOGICAL SURVEY

UNITED STATES
DEPARTMENT OF THE ARMY
CORPS OF ENGINEERS
1276 16 SW
(GEARHART)

TILLAMOOK HEAD QUADRANGLE
OREGON-CLATSOP CO.
7.5 MINUTE SERIES (TOPOGRAPHIC)
NW/4 CANNON BEACH 15' QUADRANGLE

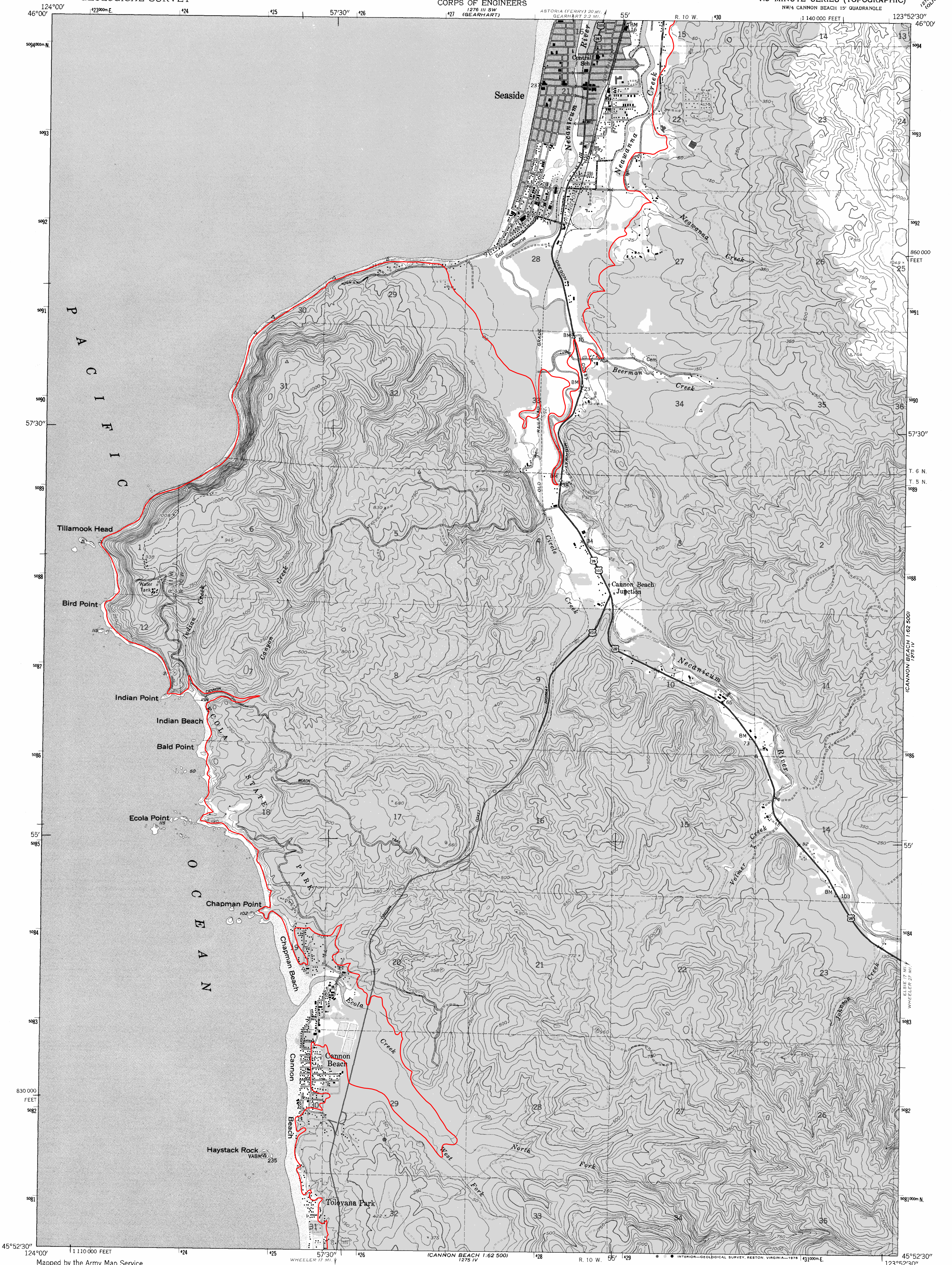
**Open File Report
O-95-15
Tsunami Hazard Map of
the Tillamook Head Quadrangle,
Clatsop County, Oregon**

Tsunami inundation boundary
upper limit of area expected to be covered by
flood water from a tsunami caused by a
magnitude 8.8 undersea earthquake

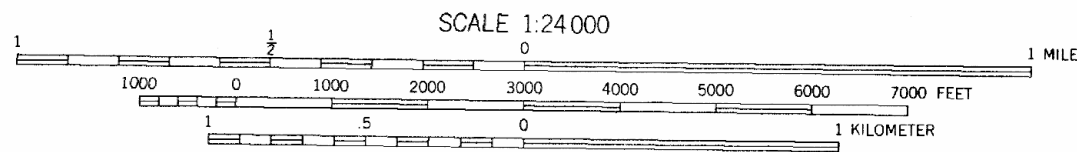
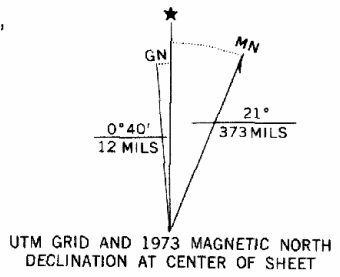
*See accompanying text for use of this map, mapping
methodology, and acknowledgments.*

Mapping by:

George R. Priest, Oregon Department of Geology
and Mineral Industries, October-November, 1995.



Mapped by the Army Map Service
Published for civil use by the Geological Survey
Control by USGS, USC&GS, USCE, Oregon Geodetic Survey,
State Highway Dept., and Pacific Power and Light Company
Topography from aerial photographs by multiplex methods
Aerial photographs taken 1943. Field check 1949
Polyconic projection. 1927 North American datum
10,000-foot grid based on Oregon coordinate system,
north zone
Red tint indicates area in which only
landmark buildings are shown
Dashed land lines indicate approximate locations
1000-meter Universal Transverse Mercator grid ticks,
zone 10, shown in blue



CONTOUR INTERVAL 50 FEET
DASHED LINES REPRESENT HALF-INTERVAL CONTOURS
NATIONAL GEODETIC VERTICAL DATUM OF 1929
SHORELINE SHOWN REPRESENTS THE APPROXIMATE LINE OF MEAN HIGH WATER
THE AVERAGE RANGE OF TIDE IS APPROXIMATELY 8 FEET
THIS MAP COMPLIES WITH NATIONAL MAP ACCURACY STANDARDS
FOR SALE BY U.S. GEOLOGICAL SURVEY, DENVER, COLORADO 80225, OR RESTON, VIRGINIA 22092
A FOLDER DESCRIBING TOPOGRAPHIC MAPS AND SYMBOLS IS AVAILABLE ON REQUEST



ROAD CLASSIFICATION
Heavy duty 4 LANE 16 LANE Light duty 2 LANE 6 LANE
Medium duty 2 LANE 6 LANE Unimproved dirt
U.S. Route State Route

TILLAMOOK HEAD, OREG.
NW/4 CANNON BEACH 15' QUADRANGLE
N4552.5-W12352.5/7.5

1949
PHOTOREVISED 1973
AMS 1275 IV NW-SERIES V892

Revisions shown in purple compiled by the Geological Survey from
aerial photographs taken 1973. This information not field checked