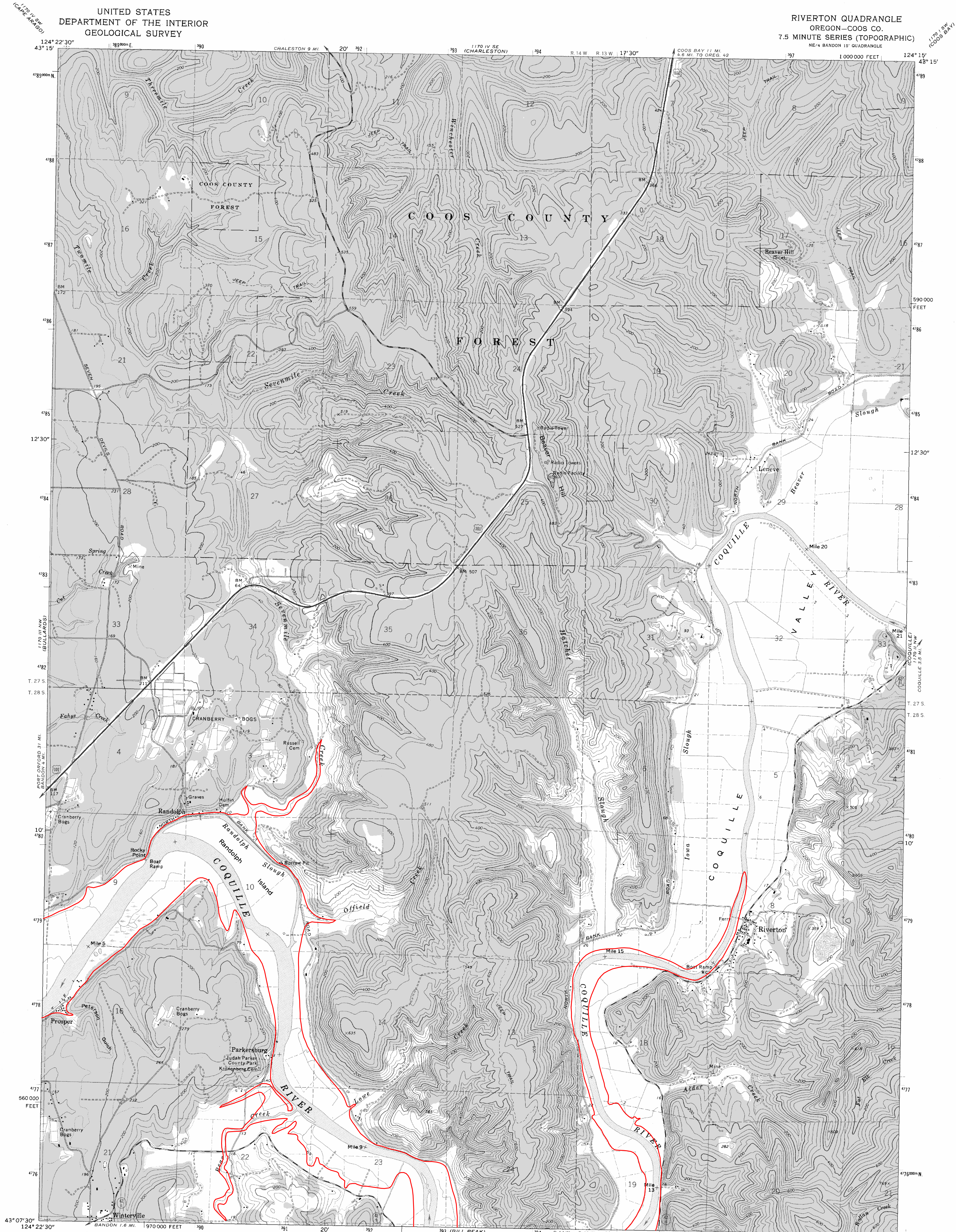


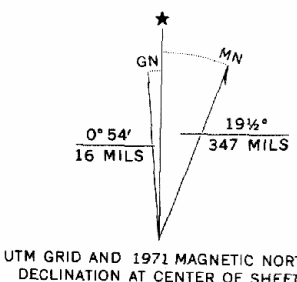
STATE OF OREGON
DEPARTMENT OF GEOLOGY AND MINERAL INDUSTRIES
DONALD A. HULL, STATE GEOLOGIST

UNITED STATES
DEPARTMENT OF THE INTERIOR
GEOLOGICAL SURVEY

RIVERTON QUADRANGLE
OREGON—COOS CO.
7.5 MINUTE SERIES (TOPOGRAPHIC)
NE 4 BANDON 15' QUADRANGLE



Mapped, edited, and published by the Geological Survey
Control by USGS, USC&GS, and State of Oregon
Topography by photogrammetric methods from aerial
photographs taken 1969-70. Field checked 1971
Projection and 10,000-foot grid ticks: Oregon coordinate
system, south zone (Lambert conformal conic)
1000-meter Universal Transverse Mercator grid ticks,
zone 10, shown in blue. 1927 North American datum
To place on the predicted North American Datum 1983
move the projection lines 22 meters north and
99 meters east as shown by dashed corner ticks
Fine red dashed lines indicate selected fence lines



SCALE 1:24 000
1 000 2000 3000 4000 5000 6000 7000 FEET
1 2 3 4 5 6 KILOMETER
CONTOUR INTERVAL 40 FEET
DOTTED LINES REPRESENT 20-FOOT CONTOURS
NATIONAL GEODETIC VERTICAL DATUM OF 1929

FOR SALE BY U. S. GEOLOGICAL SURVEY, DENVER, COLORADO 80225, OR RESTON, VIRGINIA 22092
A FOLDER DESCRIBING TOPOGRAPHIC MAPS AND SYMBOLS IS AVAILABLE ON REQUEST



Map photinspected 1975
No major culture or drainage changes observed

ROAD CLASSIFICATION
Primary highway, hard surface
Secondary highway, hard surface
Interstate Route
Light-duty road, hard or improved surface
Unimproved road
U. S. Route
State Route

RIVERTON, OREG.
NE 4 BANDON 15' QUADRANGLE
N4307.5—W12415/7.5
1971
PHOTOINSPECTED 1975
DMA 1170 III NE—SERIES V892

Open File Report O-95-50 Tsunami Hazard Map of the Riverton Quadrangle, Coos County, Oregon

Tsunami inundation boundary
upper limit of area expected to be covered by
flood water from a tsunami caused by a
magnitude 8.8 undersea earthquake

See accompanying text for use of this map, mapping
methodology, and acknowledgments.

Mapping by:
George R. Priest, Oregon Department of Geology
and Mineral Industries, October-November, 1995.