

## Introduction

The Oregon Department of Geology and Mineral Industries (DOGAMI) has been identifying and mapping the tsunami inundation hazard along the Oregon coast since 1994. In Oregon, DOGAMI manages the National Tsunami Hazard Mitigation Program, which has been administered by the National Oceanic and Atmospheric Administration (NOAA) since 1995. DOGAMI's work is designed to help cities, counties, and other sites in coastal areas reduce the potential for disastrous tsunami-related consequences by understanding and mitigating this geologic hazard. Using federal funding awarded by NOAA, DOGAMI has developed a new generation of tsunami inundation maps to help residents and visitors along the entire Oregon coast prepare for the next Cascadia Subduction Zone (CSZ) earthquake and tsunami, as well as for far-travelled or "distant" tsunamis.

The "Ring of Fire", also called the Circum-Pacific belt, is the zone of earthquake activity surrounding the Pacific Ocean. It is an arc stretching from New Zealand along the eastern edge of Asia, north across the Aleutian Islands of Alaska, and south along the coast of North and South America (Figure 1). The Ring of Fire is located at the borders of the Pacific Plate and other major tectonic plates. The Pacific Plate is colliding with and sliding underneath other plates creating subduction zones that eventually release energy in the form of an earthquake rupture. This rupture causes a vertical displacement of water that creates a tsunami. When these events occur around the Ring of Fire but not directly off the Oregon coast, they take more time to travel the Pacific Ocean and arrive onshore in Oregon (Figure 2). Distant earthquake/tsunami events have affected the Oregon coast; for example, offshore Alaska in 1964 and offshore Japan in March 2011.

Historically, about 28 distant tsunamis have been documented by Oregon tide gauges since 1854. The most severe was generated by the 1964 M9.2 Prince William Sound earthquake in Alaska. Oregon was hit hard by the tsunami, which killed four people and caused an estimated 750,000 to 1 million dollars in damage to bridges, houses, cars, boats, and sea walls. The greatest tsunami damage in Oregon did not occur along the coast front as one might expect, but in the estuary channels located further inland. Of the communities affected, Seaside was inundated by a 10 foot tsunami wave and was the hardest hit. Tsunami wave heights reached 10 to 11.5 feet in the Nehalem River, 10 to 11.5 feet at Depoe Bay, 11.5 feet at Newport, 10 to 11 feet at Florence, 11 feet at Reedsport, 11 feet at Brookings, and 14 feet at Coos Bay (Witter and others, 2011).

**Alaska-Aleutian Alaskan Speculation:** DOGAMI modeled two distant earthquake and tsunami scenarios involving M9.2 earthquakes originating near the Gulf of Alaska. The first scenario attempts to replicate the 1964 Prince William Sound event, and the second scenario represents a hypothetical maximum event. This maximum event is the same model used by the US Geological Survey (USGS) in their 2006 tsunami hazard assessment of Seaside (TPSW, 2006). This model uses extreme fault model parameters that result in maximum seafloor uplift, nearly twice as large as in the 1964 earthquake. The selected source location on the Aleutian chain of islands also shows higher energy directed toward the Oregon coast than other Alaskan source locations. For these reasons the hypothetical "Alaska Maximum" scenario is selected as the worst case distant tsunami scenario for Oregon. Detailed information on fault geometries, subsidence, computer models, and methodology used to create the tsunami scenarios presented on this map can be found in DOGAMI Special Paper 43 (Witter and others, 2011).

## Ring of Fire

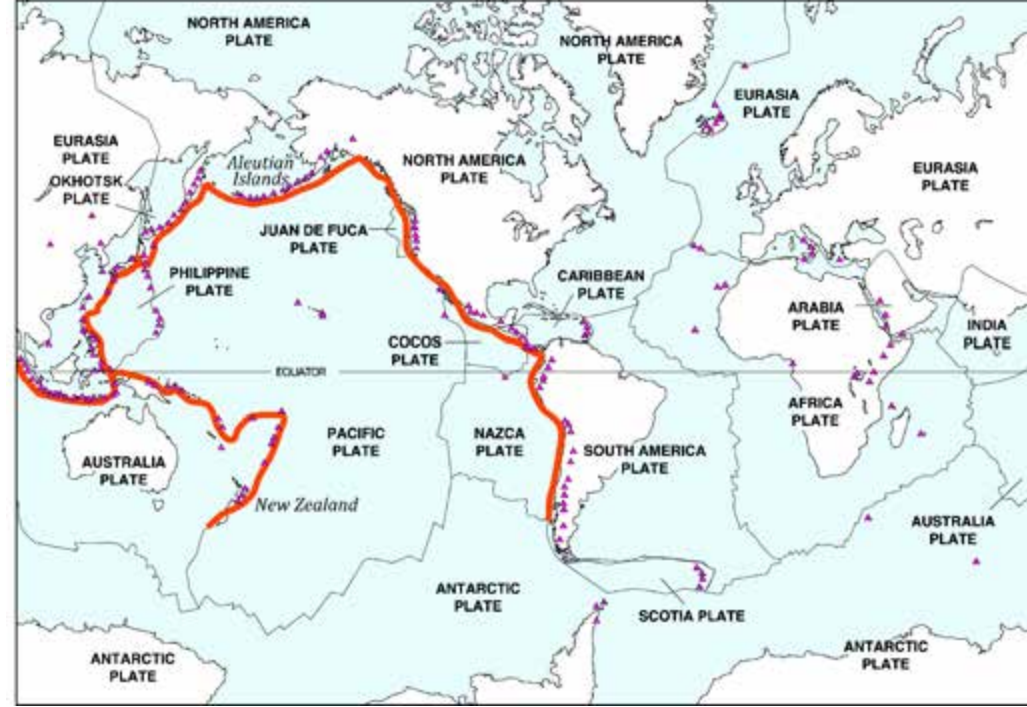


Figure 1: The "Ring of Fire" is a zone of active earthquakes and volcanoes that rings much of the Pacific Ocean, including the Oregon coast. Volcanoes and earthquakes in this ring are caused by the movements of tectonic plates. One type of movement is called subduction – when thin, oceanic plates, such as those that compose the rock beneath the Pacific Ocean, slide beneath thicker, lighter plates that make up continental plates. Earthquakes that occur as a result of subduction can trigger tsunamis.

## Prince William Sound 1964 M9.2 Earthquake and Tsunami Travel Time Map

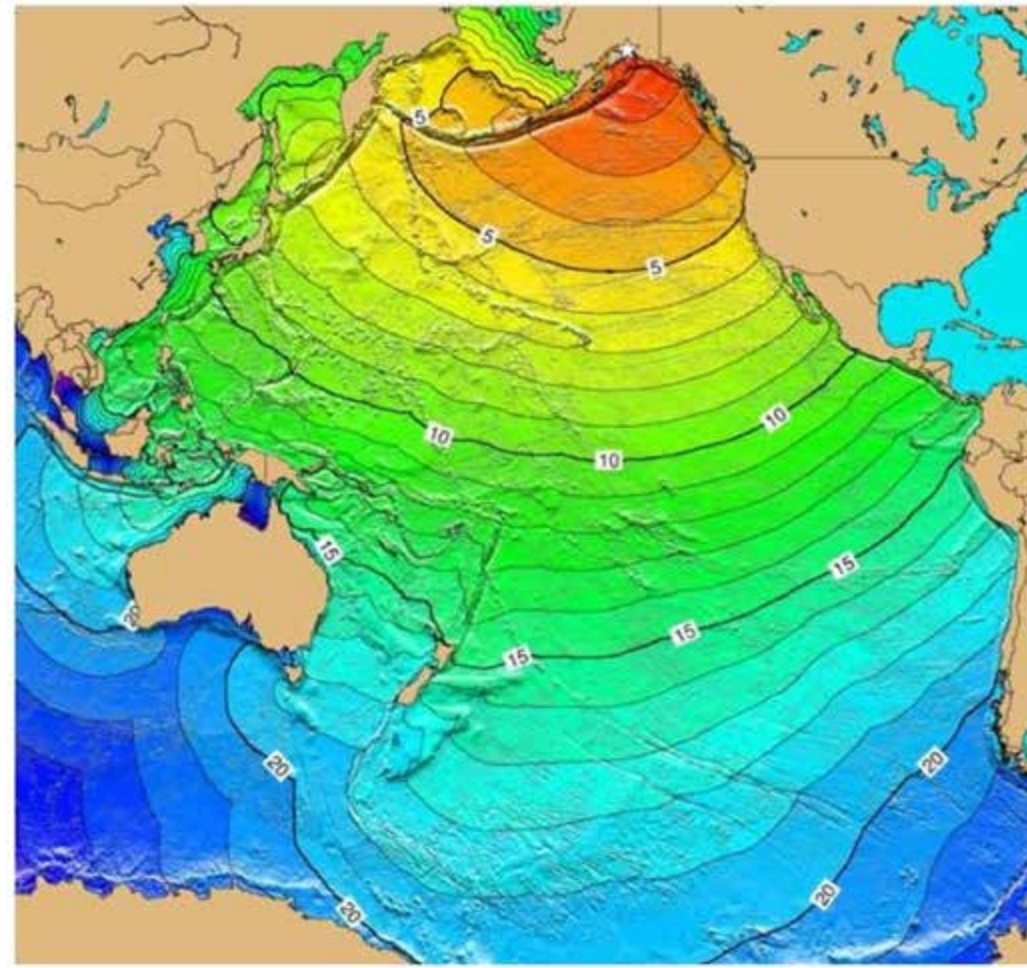


Figure 2: This image depicts the actual initial tsunami arrival times, in hours, around the Pacific Rim from the 1964 Prince William Sound earthquake. This magnitude 9.2 earthquake and resulting tsunami caused 125 deaths and \$311 million in property loss, \$84 million and 100 deaths in Alaska (NOAA/NOAA). The tsunami devastated many towns along the Gulf of Alaska, left serious damage in British Columbia, Hawaii, and along the west coast of the United States, and was recorded on tide gauges in Cuba and Puerto Rico.

## Buildings within Tsunami Inundation Zones

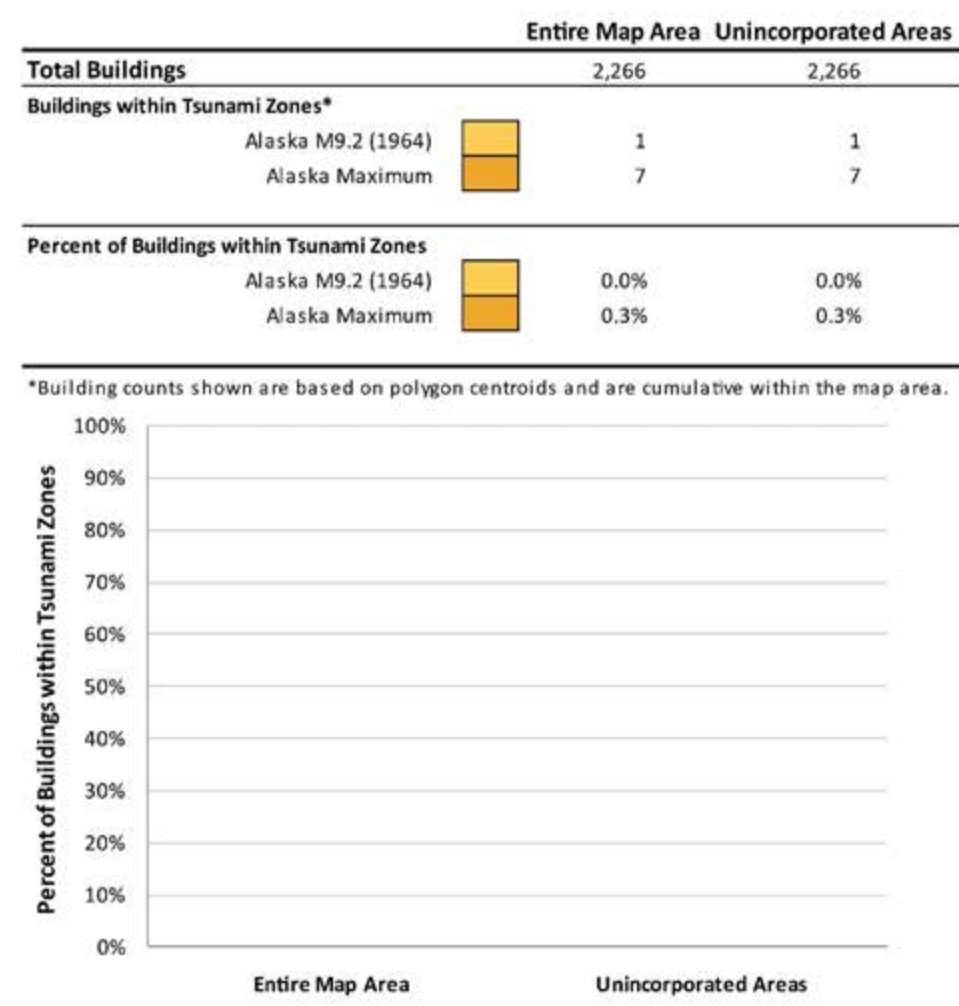


Figure 3: The table and chart show the number of buildings inundated for the Alaska M9.2 (1964) and the Alaska Maximum tsunami scenarios for cities and unincorporated portions of the map.

## Estimated Tsunami Wave Height through Time for Simulated Gauge Station

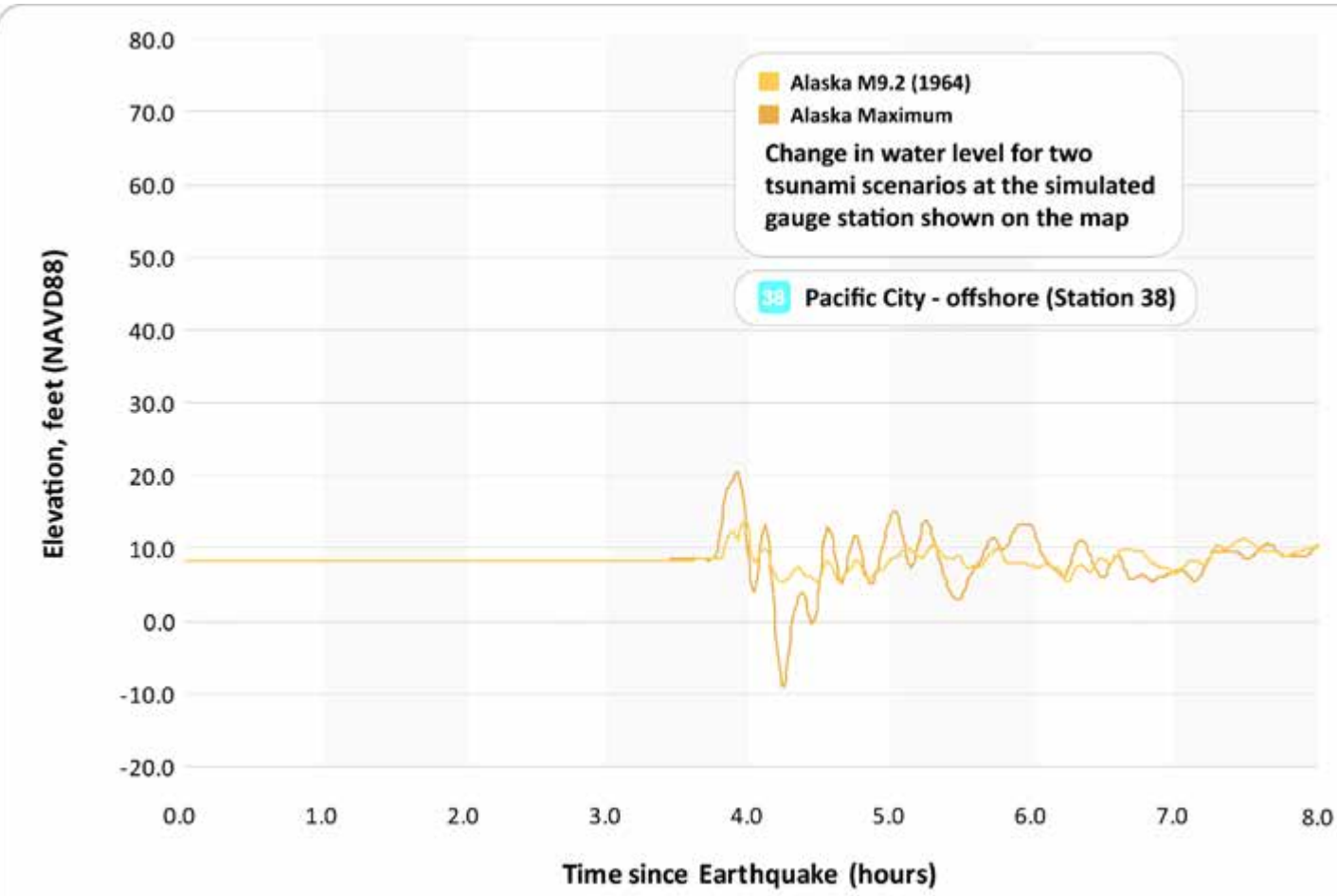


Figure 4: This chart depicts the tsunami waves as they arrive at the selected reference point (simulated gauge station). It shows the change in wave heights for the two Alaska tsunami scenarios over an 8-hour period. Wave heights vary through time, and the first wave will not necessarily be the largest or waves interfere and reflect off local topography and bathymetry.

# Distant Source (Alaska-Aleutian Subduction Zone) Tsunami Inundation Map Pacific City, Oregon

2012

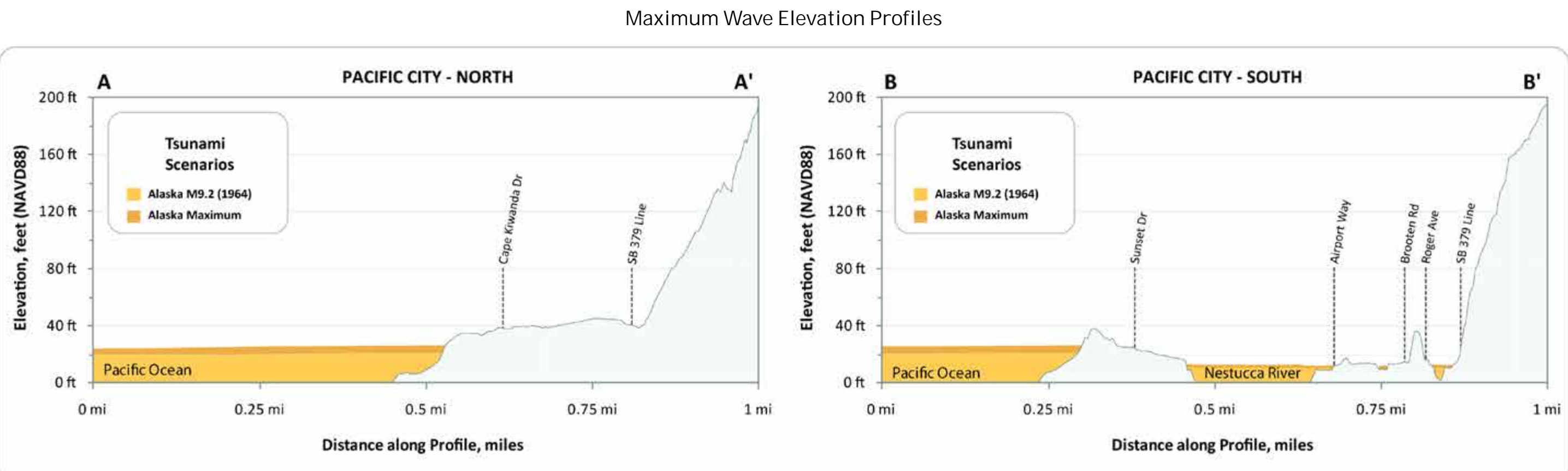
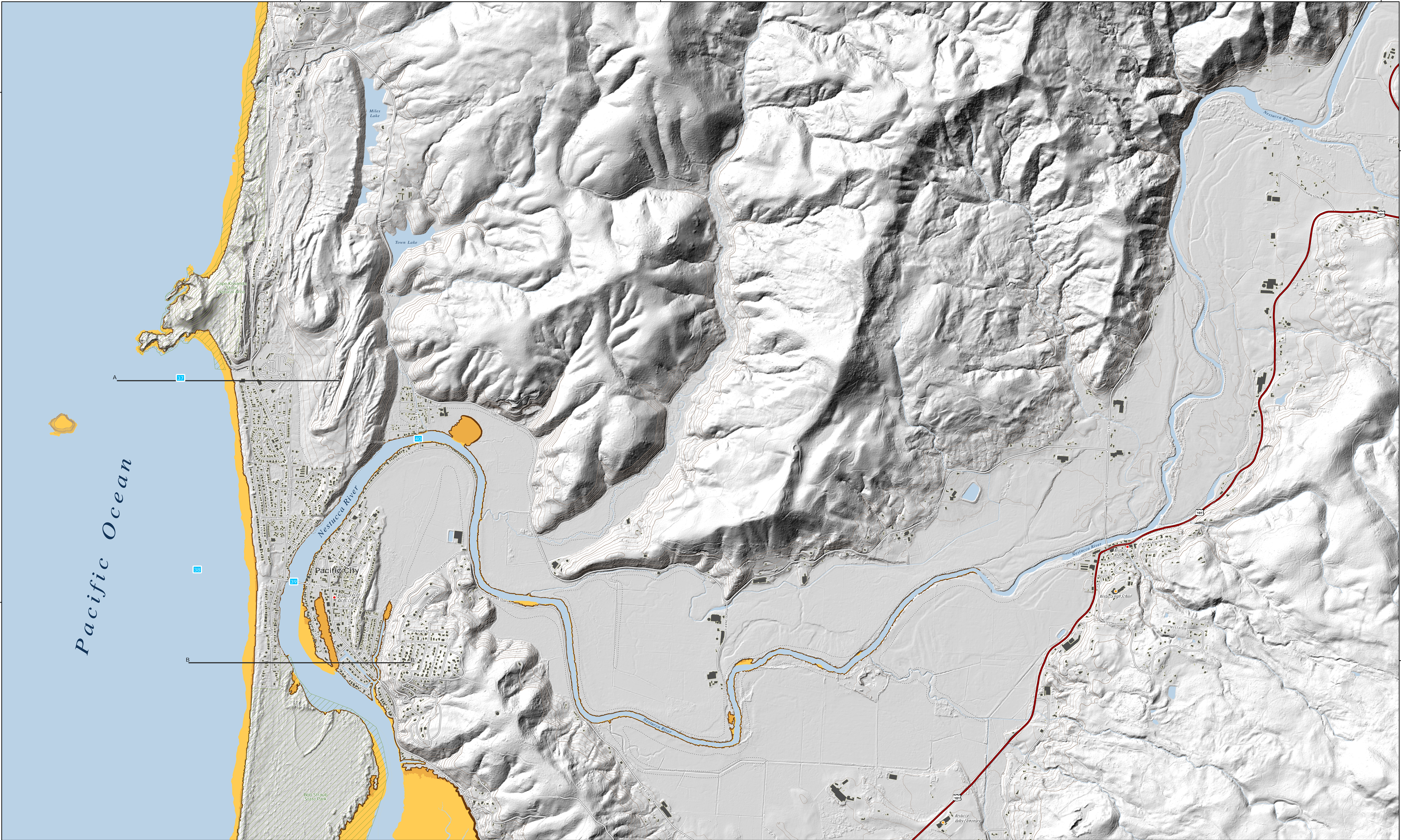
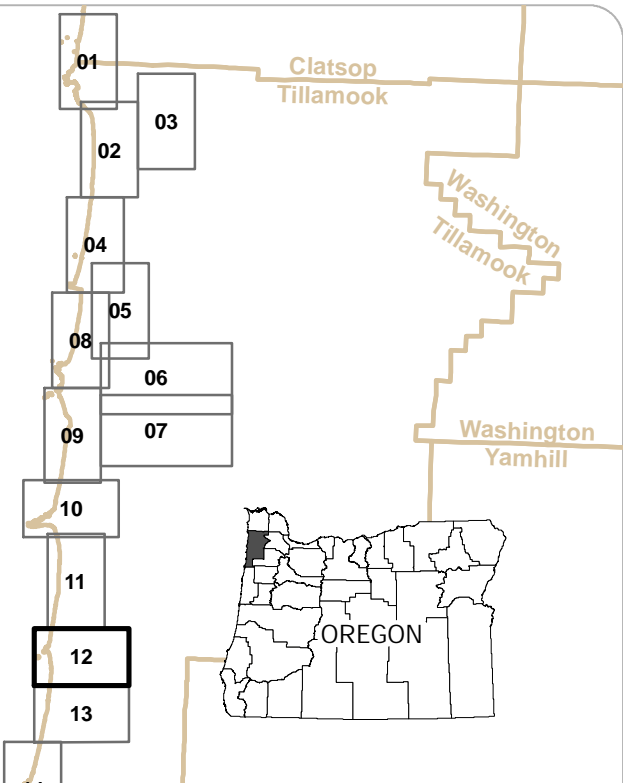


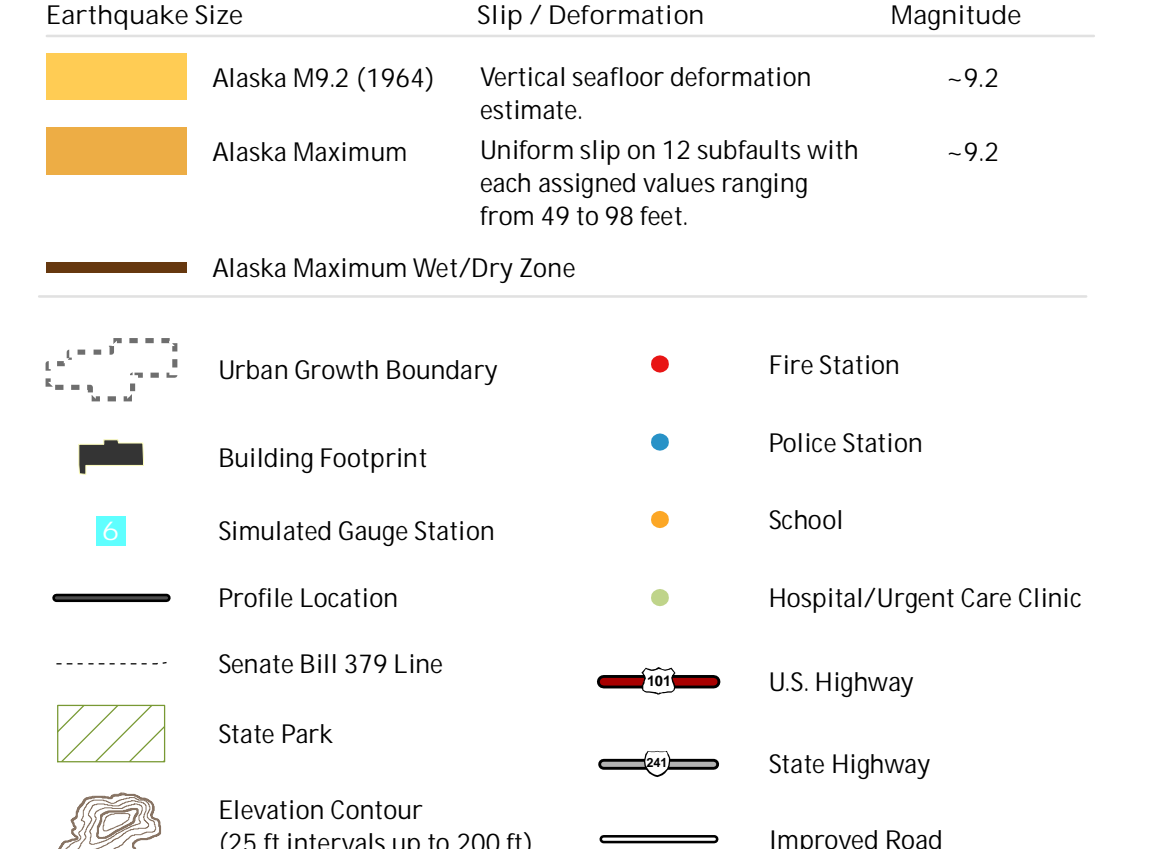
Figure 5: These profiles depict the expected maximum tsunami wave elevation for the two Alaska tsunami scenarios along lines A-A' and B-B'. The tsunami scenarios are modeled to occur at static (no flow) tide and equal to the Mean Higher High Water (MHHW) high tide.

## Tsunami Inundation Map Index



Till 01 Arch Cape - Falcon Cove	Till 08 Cape Meares
Till 02 Astoria - Nehalem	Till 09 Nehalem - Oceanside
Till 03 Nehalem - Seaside	Till 10 Cape Lookout
Till 04 Backway Beach	Till 11 Seaside - Pacific City
Till 05 Pacific City - Bay City	Till 12 Pacific City
Till 06 Tillamook - North	Till 13 Nehalem Bay
Till 07 Tillamook - South	Till 14 Necanicum

## Legend



## Data References

**Source Data**  
This map is based on hydrographic tsunami modeling by Joseph Zhang, Oregon Health and Science University, Portland, Oregon. Model data files were courtesy from 1. English and George R. Priest, Department of Geology and Mineral Industries (DOGAMI), Portland, Oregon.  
Hydrographic data contours, critical facilities, and building footprints were created by DOGAMI. Senate Bill 379 line data were contributed by Rachel K. Lyles Smith and Ian P. Austin, DOGAMI, in 2011 (GIS file set, in press, 2012).  
Urban growth boundaries (2010) were provided by the Oregon Department of Land Conservation and Development (DLCD).  
Topographic data (2011) provided by Tillamook County were collected by DOGAMI to improve the spatial accuracy of the model and to accurately represent constructed roads not present in the original data layer.  
Lidar data are from DOGAMI Lidar Data Quadrangles LID-2011-45123-01-Hydro and LID-2011-45123-02-Hydro.  
Coordinate System: Oregon Statewide Lambert Conformal Conic (NAD 1983) Horizontal Datum: NAD 1983 HARN Vertical Datum: NAVD 1988 Contours shown with geographic coordinates (latitude/longitude).  
Software: ArcGIS 10.0, Microsoft® Excel®, and Adobe® Illustrator®.  
**Funding:** This map was funded under award #M00W000180 by the National Oceanic and Atmospheric Administration (NOAA) through the National Tsunami Hazard Mitigation Program.  
**Map Data Creation/Development:** Assistant Assistant State Geologist George R. Priest, Laura L. Smith, Ian P. Austin, Rachel K. Lyles Smith, Alexander L. Hughes, Susan G. Pickner.  
**Map Production:** Cartography: Katherine L.B. Hughes, Susan G. Pickner, Taylor E. Womack.  
**Staff:** Don W.T. Lewis, Rachel K. Lyles Smith, George R. Priest, Vicki S. McConnell, Ian P. Austin, Rachel K. Lyles Smith, Alexander L. Hughes, Susan G. Pickner, Taylor E. Womack.  
**Approval:** Deborah A. Schuler.  
**Map Date:** 11/17/2011.  
**Map Scale:** 1:100,000.  
**For copies of this publication contact:** National of the Northwest Information Center, 800 NE Oregon Street, 4th, Ste. 300, Portland, Oregon 97232. Phone: (503) 273-2021. Fax: (503) 273-2021. Web: www.nwinfo.org.