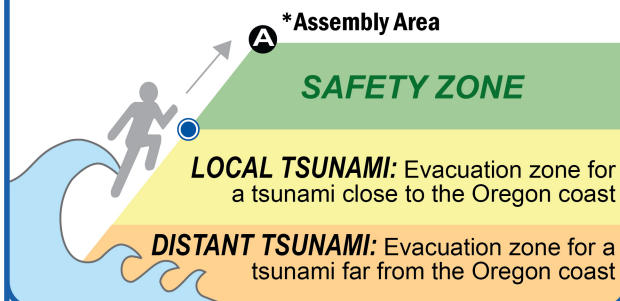


LONG AND SLOW, TIME TO GO!

IF YOU FEEL STRONG SHAKING,
A TSUNAMI MAY BE COMING...

- **Drop, Cover, and Hold On** until the earthquake is over. Protect yourself.
- **Run Inland to High Ground.**
LEAVE IMMEDIATELY. DO NOT WAIT for an official warning. **GO ON FOOT.**
- **Follow Evacuation Route Signs and Arrows** to your nearest safety destination out of the tsunami zone.
- **Do not slow down.** Maintain your speed until you leave the tsunami zone. Safety may be identified by **BLUE LINES** painted across the road or by an Assembly Area* sign. Once safe, go to the nearest Assembly Area* or neighborhood gathering site.
- **Do not return to the beach.** Large waves may continue to come onshore for up to 12 hours. **WAIT** for official NOAA tsunami cancellation and a **cautionary re-entry notice** by local emergency officials before returning to low lying areas.



LOCAL TSUNAMI: Evacuation zone for a tsunami close to the Oregon coast

DISTANT TSUNAMI: Evacuation zone for a tsunami far from the Oregon coast

A **LOCAL TSUNAMI** can reach the shore in 10 to 20 minutes after the earthquake — before there is time for an official warning from the national warning system.

Ground shaking from the earthquake may be the only warning you receive. Quickly move inland to high ground.

A **DISTANT TSUNAMI** will take 4 hours or more to reach the shore. You will feel no earthquake, and the tsunami will be smaller than that from a local earthquake. There is time for an official warning, evacuation, and assistance from local emergency officials.

Look for tsunami hazard zone signs and be ready to leave an area by following evacuation route signs.

Know and practice your evacuation route.



Funded by the National Oceanic and Atmospheric Administration under NTHMP contract award NA20NWS4670064 through the Oregon Department of Geology and Mineral Industries. Published by the Oregon Department of Geology and Mineral Industries in consultation with local emergency management officials.

- **A** *Assembly Areas are shown on the map, where identified.
- **B** Evacuate to your nearest point of safety first. Make your way to your nearest Assembly Area after large waves have stopped.



OregonTsunami.org

Gold Beach Hunter Creek Curry County - Map 16



This information could
save your life —
Please read it and share it
with your family and friends.



GO TO HIGH GROUND
The Shaking is your Tsunami Warning



TSUNAMI EVACUATION MAP

GOLD BEACH HUNTER CREEK

Curry County - Map 16

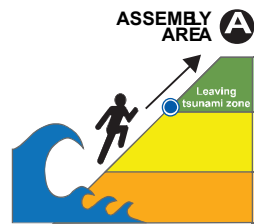
Visit www.oregontsunami.org
to find more great resources!

IF YOU FEEL AN EARTHQUAKE:

- Drop, cover, and hold
- Move immediately inland to higher ground
- Do not wait for an official warning

SI SIENTE UN SISMO:

- Agáchate, cúbrete y agárrate
- Aléjese del mar, subir a un terreno más alto
- No demore por esperar a recibir notificación de las autoridades



PUNTO DE REUNION

NOTICE: This tsunami evacuation map was developed by DOGAMI for the purpose of guiding the public out of the tsunami hazard zone in the event of a tsunami evacuation. This map adopts recommendations from the Oregon Tsunami Advisory Council. The evacuation routes were developed by DOGAMI, in consultation with local emergency officials.



OUTSIDE HAZARD AREA: Evacuate to this area for all tsunami warnings or if you feel an earthquake

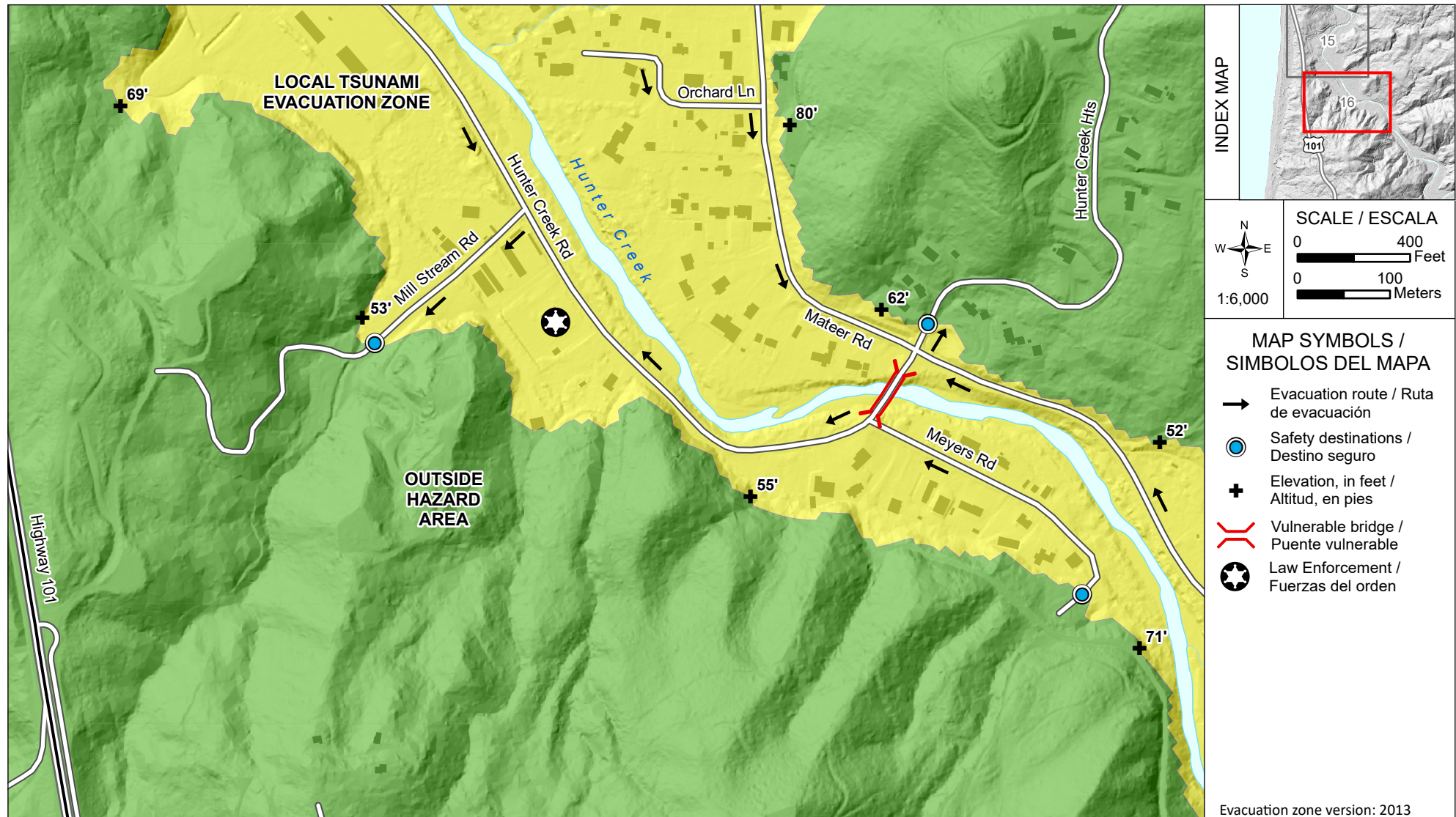
LOCAL CASCADIA EARTHQUAKE AND TSUNAMI:
Evacuation zone for a local tsunami from an earthquake at the Oregon Coast

DISTANT TSUNAMI: Evacuation zone for a distant tsunami from an earthquake far away from the Oregon Coast

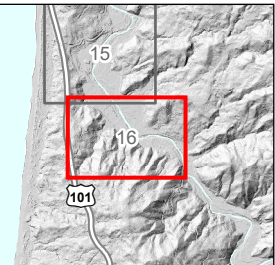
FUERA DE LA ZONA DE RIESGO: Dirigirse a estas zona si siente un sismo o si suena una de las alertas de tsunami warnings or if you feel an earthquake

ZONA DE INUNDACIÓN POR TSUNAMI DE ORIGEN LOCAL:
Esta es la zona que será inundada en caso de ocurrir un sismo de Cascadia que resulte en un tsunami.

ZONA DE INUNDACIÓN POR TSUNAMI DE ORIGEN CERCANO:
Esta es la zona que será inundada en caso de ocurrir un sismo lejos de Oregon.



INDEX MAP



SCALE / ESCALA
0 400 Feet
0 100 Meters
1:6,000

MAP SYMBOLS / SIMBOLOS DEL MAPA

- Evacuation route / Ruta de evacuación
- Safety destinations / Destino seguro
- + Elevation, in feet / Altitud, en pies
- ✂ Vulnerable bridge / Puente vulnerable
- ★ Law Enforcement / Fuerzas del orden

Evacuation zone version: 2013